



用芯驱动未来

DRIVE THE FUTURE WITH MOT CHIP

广东仁懋电子有限公司
Guangdong Inmark Electronics Co., Ltd

广东仁懋电子有限公司
Guangdong Inmark Electronics Co., Ltd

深圳总部: 广东省深圳市罗湖区桂园街道深城投中心大厦19楼

Headquarters: 19th Floor, SCTC Mansion, GuiYuan RD, Luohu, Shenzhen

深圳基地: 深圳市宝安区松岗大道2号仁懋工业园

FACTORY-1: Renmao Industrial Park, No.2 Songgang Avenue, Bao'an District, Shenzhen, Guangdong Province

江苏基地: 江苏省盐城市亭湖区太湖路33号1栋、3栋

FACTORY-2: 1# and 3#, No.33, Taihu RD, Tinghu District, Yancheng City, Jiangsu Province, China.

TEL: 0755-82527851

网址: www.mot-mos.com



国家高新技术企业
National high-tech enterprise

国家专精特新小巨人企业
National Special New "Little Giant" Enterprise

国家标准制定单位
National Standard-setting unit

Contents

目录

公司简介.....	3
Company Introduction	
发展历程.....	5
Development Process	
企业文化.....	7
Company Culture	
自主知识产权.....	9
Independent Intellectual Property Rights	
检测认证.....	11
Test and Certificates	
荣誉资质.....	12
Honor and Qualification	
高端智能线.....	13
High-end Intelligent Production Line	
应用领域.....	15
Production Applications	
封装外型.....	16
Package Outlines	
产品选型表.....	17
Production Selection	
可靠性能试验项目.....	52
Reliability Performance Test Project	

公司简介 Company Profile



广东仁懋电子有限公司创始于2011年，是国内知名的半导体封装测试高新技术企业，国家级专精特新企业“小巨人”企业，致力于为全球电子制造企业提供优质半导体元器件产品。发展至今，仁懋电子拥有两大生产基地：珠三角深圳厂及长三角江苏盐城，建筑面积为40000平方米，目前封装测试车间面积为20000平米，主要封装形式为SOT、TO系列、PDFN产品封装。随着公司的投入和工艺技术不断优化，品质稳步提升，先后与业界知名企业建立战略合作关系，已发展成为全国颇具竞争力的功率器件封测企业。

仁懋电子目前公司员工总共500余人，其中研发人员100余人。公司成立以来即专注于MOSFET、IGBT等半导体芯片和功率器件的研发、设计及销售，产品优质且系列齐全，涵盖了主流的集成电路的系统应用。主营产品：肖特基二极管、三极管、低中高压MOS、快恢复二极管、低压降肖特基、IGBT等，广泛应用于消费电子、汽车电子、工业电子、新能源汽车及充电桩、智能装备制造、轨道交通、光伏新能源、5G等领域。

仁懋电子坚持自主研发制造，打破国外技术壁垒，助推碳化硅汽车芯片的国产化，目前，公司已申请/获得专利近百余项，形成立体的知识产权保护体系，创立自主品牌MOT，同时引进国际一流的高端设备，自动化程度高，保证了产品的稳定性，半导体器件封装和测试生产线具世界先进水平，为现代化大生产提供了坚实基础。

仁懋电子广聚人才，以院士、博士等行业领军人才为核心，将进一步依托技术、品牌、渠道等综合优势，开拓国际先进功率器件封装制造技术，全力推进高端功率MOSFET、IGBT、集成功率器件的研发与产业化，持续布局半导体功率器件先进前沿的技术领域，提升公司核心产品竞争力和市场地位，深化产品的全面国产化，开拓创新，提供高质量产品，为我们的客户开发节能可持续的解决方案。仁懋电子建立了高效的供应链管理流程，每年的出货量均能超过百亿只，满足了市场以及客户的严苛要求。

Guangdong Inmark Electronics Co., Ltd. was founded in 2011. It is a well-known domestic high-tech enterprise specializing in semiconductor packaging and testing. It is recognized as a specialized and innovative enterprise in Guangdong Province and a target for nurturing "Little Giant" enterprises at the national level. The company is committed to providing high-quality semiconductor component products for global electronic manufacturing companies. It has two production bases: Shenzhen factory in the Pearl River Delta and Yancheng factory in the Yangtze River Delta, with a total construction area of 40,000 square meters. The current packaging and testing workshop area is 20,000 square meters, and the main packaging forms include SOT, TO series, and PDFN. With the company's investment and process technology continuously optimized, the product quality has steadily improved. It has established strategic cooperative relationships with well-known companies in the industry and has developed into a power device packaging and testing enterprise with strong competitiveness in China.

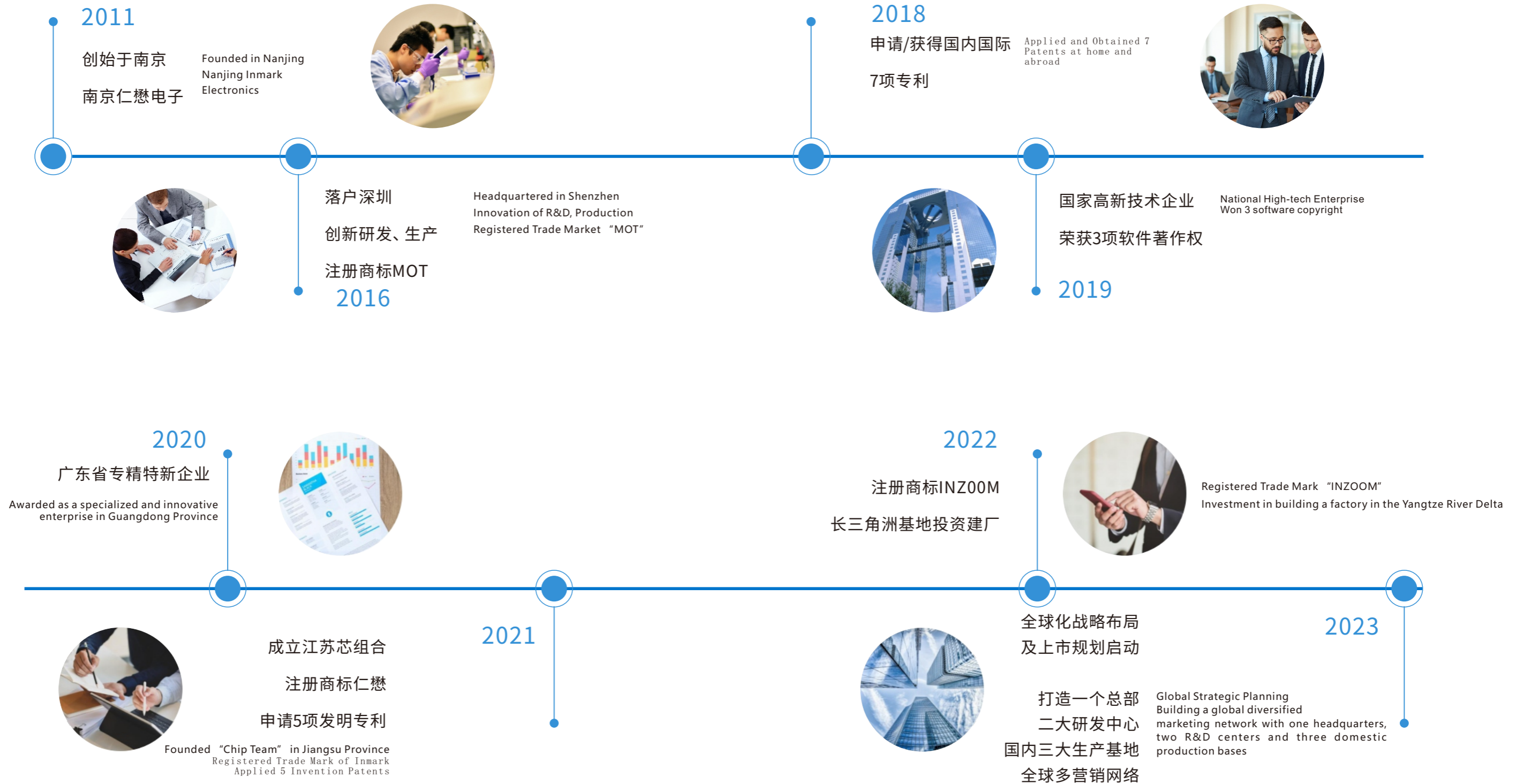
Inmark Electronics currently has a total of more than 500 employees, including over 100 R&D personnel. Since its establishment, the company has been focused on the research, design, and sales of semiconductor chips and power devices such as MOSFETs and IGBTs. The products are of high quality and complete in series, covering the system applications of mainstream integrated circuits. The main products are Schottky diodes, transistors, low- to high-voltage Mosfet, fast recovery diodes, low-voltage drop Schottky, IGBTs, etc., which are widely used in consumer electronics, automotive electronics, industrial electronics, new energy vehicles and charging piles, intelligent equipment manufacturing, rail transit, photovoltaic new energy and 5G fields.

Inmark Electronics adheres to independent R&D and manufacturing, breaking through foreign technological barriers and promoting the localization of silicon carbide automotive chips. Currently, the company has applied for/obtained nearly one hundred patents, forming a comprehensive intellectual property protection system. Inmark Electronics has established its own brand, MOT, and introduced internationally advanced high-end equipment, which ensures high automation and product stability. The semiconductor device packaging and testing production lines are at the world's advanced level, providing a solid foundation for modern large-scale production.

Inmark Electronics has gathered talents, with academicians, doctors and other industry leaders as the core. It will further rely on comprehensive advantages such as technology, brand and channels to develop international advanced power device packaging and manufacturing technology, and fully promote the research and development and industrialization of high-end power MOSFETs, IGBTs, integrated circuits and other devices. It will continue to lay out the advanced frontiers of semiconductor power devices, enhance the core product competitiveness and market position of the company, deepen the comprehensive localization of products, develop innovations, provide high-quality products, and develop energy-saving and sustainable solutions for our customers. Inmark Electronics has established an efficient supply chain management process. The annual shipment volume can exceed tens of billions to meet the harsh requirements of the market and customers.



发展历程 Road Map



| 企业文化 |

Company Culture

| 企业愿景 | 用专业缔造光辉的百年企业!

Vision | Creating a century-old enterprise with professionalism

| 企业使命 | 为世界科技进程而不懈努力!

Mission | Unremitting efforts for the world's technological progress

| 企业价值观 | 提供优质产品证明企业存在的价值!

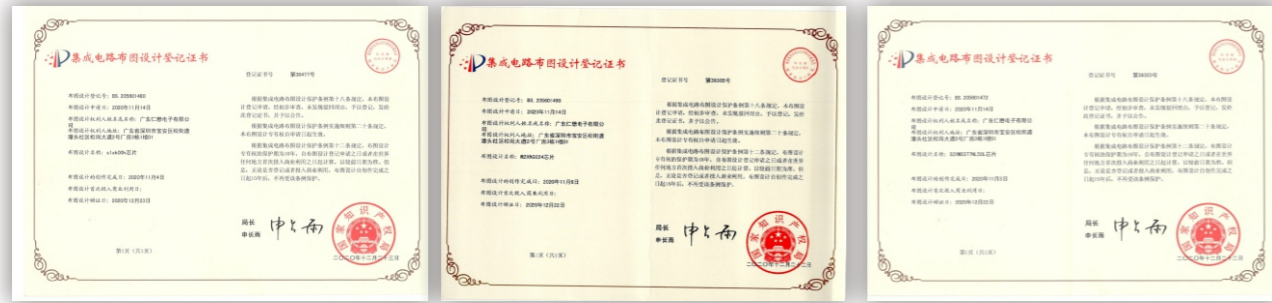
Value | Providing high-quality products proves the value of the enterprise's existence



为加速全球化战略布局,仁懋电子打造1个总部,2个研发中心,3大生产基地,实现全球多营销网点的产业新形态。励志于成为半导体封测行业国际知名的民主自主品牌,助力信息社会发展。

In order to accelerate the global strategic deployment, Inmark Electronics has created one headquarters, two R&D centers, and three large production bases to realize a new form of global multi-marketing network. It is committed to becoming an internationally renowned democratic and independent brand in the semiconductor packaging and testing industry and helping the development of information society.

自主知识产权 Intellectual Property Rights

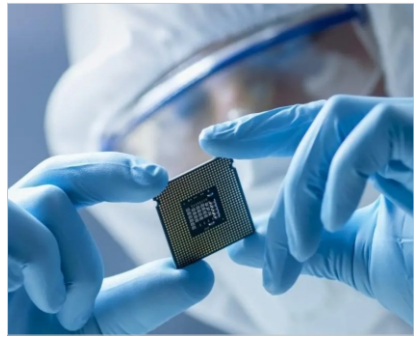


|| 高端智能产线 High-end Intelligent Production Line

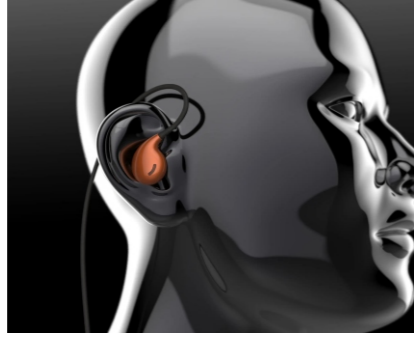


仁懋电子创立自主品牌MOT、INZOOM等。引入国际一流的高端先进设备,打造高标准智能生产线,不断优化生产工艺流程,严格按照ISO9001质量管理体系进行品质管控,发展至今,企业总资产数十亿元,拥有半导体功率器件To封装生产线20余条,Toll产线10条,SOT生产线10条,年产各类分立器件10亿支以上,小信号器件100亿支。

Inmark Electronics established its own brand MOT, INZOOM, etc. It has introduced world-class advanced equipment, built high-standard intelligent production lines, continuously optimized production processes, and strictly controlled quality according to the ISO9001 quality management system. Up to now, the company's total assets are tens of billions of yuan. It has more than 20 semiconductor power device T0-packaging production lines, 10 TOLL production lines, 10 SOT production lines, and produces more than 1 billion various discrete devices and 10 billion small signal devices annually.



医疗电子
Medical Electronics



消费电子
Consumer Electronics



手机通信
Mobile Communications



汽车电子
Automotive Electronics



工业控制
Industrial Control



信息安全
Information Safety



PC
Personal Computer



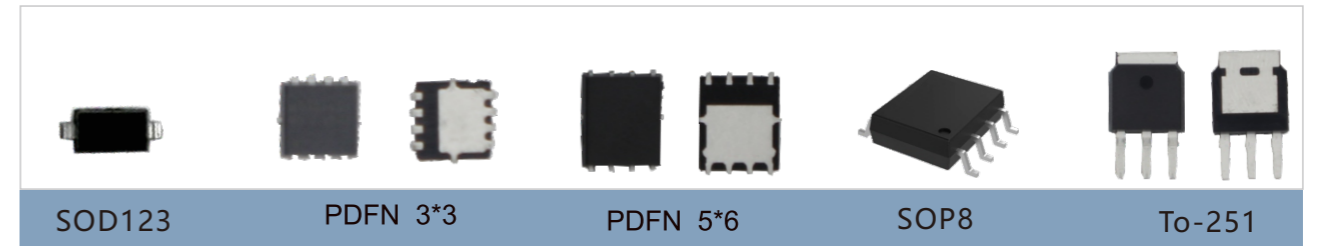
新能源
New Energy



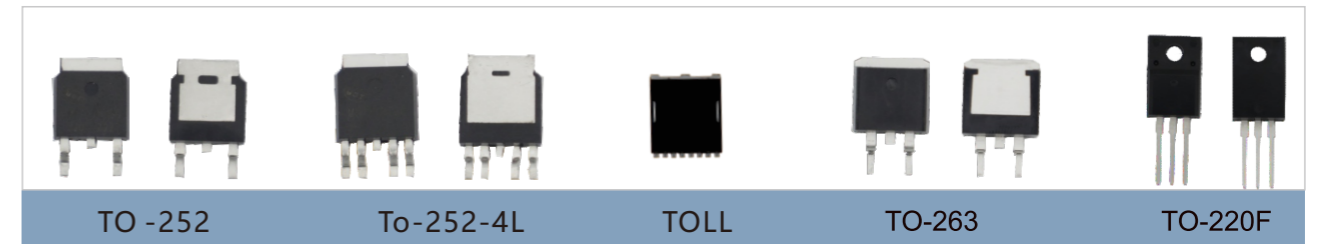
光伏
Photovoltaic Power



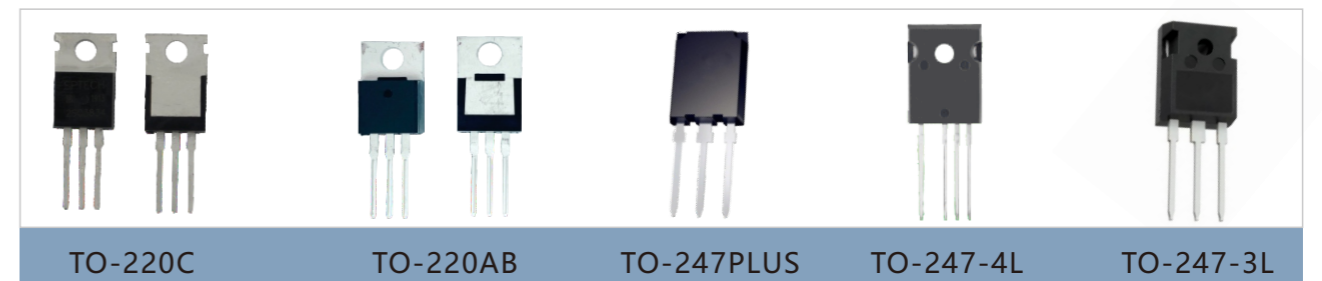
SOT-23 SOT23-3 SOT23-5 SOT23-6 SOD323



SOD123 PDFN 3*3 PDFN 5*6 SOP8 To-251



TO-252 To-252-4L TOLL TO-263 TO-220F



TO-220C TO-220AB TO-247PLUS TO-247-4L TO-247-3L



TO-247S TO-3PN TO-3PB TO-3PH TO-3PL

产品选型表 Production Selection

高压平面MOS(High-Voltage Planar Mosfet)

序号	Part-NO	Package Type	ID(A)	V _{DS} (V)	VGS(th)(V)	R _{DS(on) (MAX)} (Ω)
1	MOT4511A	T0-220	11	450	2-4	0.52
2	MOT4511AF	T0-220F	11	450	2-4	0.52
3	MOT4511AD	T0-252	11	450	2-4	0.52
4	MOT4512F	T0-220F	12	450	2-4	0.52
5	MOT4512D	T0-252	12	450	2-4	0.52
6	MOT4513A	T0-220	13	450	2-4	0.42
7	MOT4513AF	T0-220F	13	450	2-4	0.42
8	MOT4N50SD	T0-252 带快恢复	4	500	2-4	3.5
9	MOT4N50D	T0-252	4	500	2-4	3.5
10	MOT5N50A	T0-220	5	500	2-4	1.6
11	MOT5N50F	T0-220F	5	500	2-4	1.6
12	MOT5N50C	T0-251	5	500	2-4	1.6
13	MOT5N50D	T0-252	5	500	2-4	1.6
14	MOT5N50MD	T0-252	5	500	2-4	2.5
15	MOT5N50XD	T0-252	5	500	2-4	2.9
16	MOT6N50D	T0-252	6	500	2-4	1.4
17	MOT6N50SD	T0-252	6	500	2-4	1.4
18	MOT9N50A	T0-220	9	500	2-4	0.8
19	MOT9N50F	T0-220F	9	500	2-4	0.8
20	MOT9N50C	T0-251	9	500	2-4	0.8
21	MOT9N50D	T0-252	9	500	2-4	0.8
22	MOT9N50EA	T0-220	9	500	2-4	0.75
23	MOT9N50EF	T0-220F	9	500	2-4	0.75
24	MOT9N50EC	T0-251	9	500	2-4	0.75
25	MOT9N50ED	T0-252	9	500	2-4	0.75
26	MOT10N50A	T0-220	10	500	2-4	0.55
27	MOT10N50F	T0-220F	10	500	2-4	0.55
28	MOT10N50C	T0-251	10	500	2-4	0.55
29	MOT10N50D	T0-252	10	500	2-4	0.55
30	MOT11N50A	T0-220	11	500	2-4	0.55
31	MOT11N50F	T0-220F	11	500	2-4	0.55
32	MOT13N50A	T0-220	13	500	2-4	0.36
33	MOT13N50SF	T0-220F	13	500	2-4	0.55
34	MOT13N50EF	T0-220F	13	500	2-4	0.45
35	MOT13N50F	T0-220F	13	500	2-4	0.42
36	MOT13N50HF	T0-220F	13	500	2-4	0.42
37	MOT15N50A	T0-220	15	500	2-4	0.42
38	MOT15N50HF	T0-220F	15	500	2-4	0.42
39	MOT16N50A	T0-220	16	500	2-4	0.32
40	MOT16N50HF	T0-220F	16	500	2-4	0.32
41	MOT18N50EA	T0-220	18	500	2-4	0.3
42	MOT18N50HF	T0-220F	18	500	2-4	0.3
43	MOT20N50A	T0-220	20	500	2-4	0.25
44	MOT20N50HF	T0-220F	20	500	2-4	0.25
45	MOT20N50W	T0-247S	20	500	2-4	0.25
46	MOT22N50A	T0-220	22	500	2-4.5	0.23
47	MOT22N50HF	T0-220F	22	500	2-4.5	0.23
48	MOT22N50W	T0-247S	22	500	2-4.5	0.23
49	MOT28N50A	T0-220	28	500	2-4.5	0.18
50	MOT28N50HF	T0-220F	28	500	2-4.5	0.18

高压平面MOS(High-Voltage Planar Mosfet)

序号	Part-NO	Package Type	ID(A)	V _{DS} (V)	VGS(th)(V)	R _{DS(on) (MAX)} (Ω)
51	MOT28N50W	T0-247S	28	500	2-4.5	0.18
52	MOT2N60A	T0-220	2	600	2-4	3.4
53	MOT2N60F	T0-220F	2	600	2-4	3.4
54	MOT2N60C	T0-251	2	600	2-4	3.4
55	MOT2N60D	T0-252	2	600	2-4	3.4
56	MOT4N60A	T0-220	4	600	2-4	2.8
57	MOT4N60F	T0-220F	4	600	2-4	2.8
58	MOT4N60C	T0-251	4	600	2-4	2.8
59	MOT4N60D	T0-252	4	600	2-4	2.8
60	MOT5N60A	T0-220	5	600	2-4	2.4
61	MOT5N60F	T0-220F	5	600	2-4	2.4
62	MOT5N60C	T0-251	5	600	2-4	2.4
63	MOT5N60D	T0-252	5	600	2-4	2.4
64	MOT7N60A	T0-220	7	600	2-4	1.3
65	MOT7N60F	T0-220F	7	600	2-4	1.3
66	MOT7N60C	T0-251	7	600	2-4	1.3
67	MOT7N60D	T0-252	7	600	2-4	1.3
68	MOT8N60A	T0-220	8	600	2-4	0.78
69	MOT8N60F	T0-220F	8	600	2-4	0.78
70	MOT8N60C	T0-251	8	600	2-4	0.78
71	MOT8N60D	T0-252	8	600	2-4	0.78
72	MOT10N60A	T0-220	10	600	2-4	0.53
73	MOT10N60F	T0-220F	10	600	2-4	0.53
74	MOT10N60HF	T0-220F	10	600	2-4	0.53
75	MOT10N60C	T0-251	10	600	2-4	0.53
76	MOT10N60D	T0-252	10	600	2-4	0.53
77	MOT12N60A	T0-220	12	600	2-4	0.52
78	MOT12N60HF	T0-220F	12	600	2-4	0.52
79	MOT15N60HF	T0-220F	15	600	2-4	0.5
80	MOT20N60HF	T0-220F	20	600	2-4	0.38
81	MOT22N60A	T0-220	22	600	2-4.5	0.35
82	MOT22N60HF	T0-220F	22	600	2-4.5	0.35
83	MOT22N60W	T0-247S	22	600	2-4.5	0.35
84	MOT28N60A	T0-220	28	600	2-4.5	0.3
85	MOT28N60HF	T0-220F	28	600	2-4.5	0.3
86	MOT28N60W	T0-247S	28	600	2-4.5	0.3
87	MOT2N65A	T0-220	2	650	2-4	5
88	MOT2N65F	T0-220F	2	650	2-4	5
89	MOT2N65C	T0-251	2	650	2-4	5
90	MOT2N65D	T0-252	2	650	2-4	5
91	MOT4N65A	T0-220	4	650	2-4	2.8
92	MOT4N65F	T0-220F	4	650	2-4	2.8
93	MOT4N65C	T0-251	4	650	2-4	2.8
94	MOT4N65D	T0-252	4	650	2-4	2.4
95	MOT5N65A	T0-220	5	650	2-4	2.5
96	MOT5N65F	T0-220F	5	650	2-4	2.4
97	MOT5N65C	T0-251	5	650	2-4	2.4
98	MOT5N65D	T0-252	5	650	2-4	2.4
99	MOT7N65AA	T0-220	7	650	2-4	1.4
100	MOT7N65EA	T0-220	7	650	2-4	1.4

产品选型表 Production Selection

高压平面MOS(High-Voltage Planar Mosfet)

序号	Part-NO	Package Type	ID(A)	V _{DS} (V)	VGS(th)(V)	R _{DS(on)} (MAX)(Ω)
101	MOT7N65YA	T0-220	7	650	2~4	1.4
102	MOT7N65EYA	T0-220	7	650	2~4	1.4
103	MOT7N65AF	T0-220F	7	650	2~4	1.4
104	MOT7N65EF	T0-220F	7	650	2~4	1.4
105	MOT7N65YF	T0-220F	7	650	2~4	1.4
106	MOT7N65EYF	T0-220F	7	650	2~4	1.4
107	MOT7N65AC	T0-251	7	650	2~4	1.4
108	MOT7N65EC	T0-251	7	650	2~4	1.4
109	MOT7N65YC	T0-251	7	650	2~4	1.4
110	MOT7N65EYC	T0-251	7	650	2~4	1.4
111	MOT7N65AD	T0-252	7	650	2~4	1.4
112	MOT7N65ED	T0-252	7	650	2~4	1.4
113	MOT7N65YD	T0-252	7	650	2~4	1.4
114	MOT7N65EYD	T0-252	7	650	2~4	1.4
115	MOT8N65MA	T0-220	8	650	2~4	1.2
116	MOT8N65MF	T0-220F	8	650	2~4	1.2
117	MOT8N65MC	T0-251	8	650	2~4	1.2
118	MOT8N65MD	T0-252	8	650	2~4	1.2
119	MOT8N65F	T0-220F	8	650	2~4	1.2
120	MOT10N65A	T0-220	10	650	2~4	0.82
121	MOT10N65F	T0-220F	10	650	2~4	0.82
122	MOT10N65HF	T0-220F	10	650	2~4	0.82
123	MOT10N65C	T0-251	10	650	2~4	0.82
124	MOT10N65D	T0-252	10	650	2~4	0.82
125	MOT12N65A	T0-220	12	650	2~4	0.65
126	MOT12N65F	T0-220F	12	650	2~4	0.65
127	MOT12N65HF	T0-220F	12	650	2~4	0.65
128	MOT15N65HF	T0-220F	15	650	2~4	0.6
129	MOT16N65A	T0-220	16	650	2~4	0.52
130	MOT16N65HF	T0-220F	16	650	2~4	0.52
131	MOT18N65HF	T0-220F	16	650	2~4	0.52
132	MOT20N65HF	T0-220F	20	650	2~4	0.45
133	MOT22N65A	T0-220	22	650	2~4.5	0.4
134	MOT22N65HF	T0-220F	22	650	2~4.5	0.4
135	MOT22N65W	T0-247S	22	650	2~4.5	0.4
136	MOT28N65A	T0-220	28	650	2~4.5	0.35
137	MOT28N65HF	T0-220F	28	650	2~4.5	0.35
138	MOT28N65W	T0-247S	28	650	2~4.5	0.35
139	MOT2N70A	T0-220	2	700	2~4.5	5
140	MOT2N70F	T0-220F	2	700	2~4.5	5
141	MOT2N70C	T0-251	2	700	2~4.5	5
142	MOT2N70D	T0-252	2	700	2~4.5	5
143	MOT4N70A	T0-220	4	700	2~4.5	2.5
144	MOT4N70F	T0-220F	4	700	2~4.5	2.5
145	MOT4N70C	T0-251	4	700	2~4.5	2.5
146	MOT4N70D	T0-252	4	700	2~4.5	2.5
147	MOT7N70A	T0-220	7	700	2~4.5	1.5
148	MOT7N70F	T0-220F	7	700	2~4.5	1.5
149	MOT7N70C	T0-251	7	700	2~4.5	1.5
150	MOT7N70D	T0-252	7	700	2~4.5	1.5

高压平面MOS(High-Voltage Planar Mosfet)

序号	Part-NO	Package Type	ID(A)	V _{DS} (V)	VGS(th)(V)	R _{DS(on)} (MAX)(Ω)
151	MOT10N70A	T0-220	10	700	2~4.5	1
152	MOT10N70F	T0-220F	10	700	2~4.5	1
153	MOT10N70HF	T0-220F	10	700	2~4.5	1
154	MOT12N70A	T0-220	12	700	2~4.5	0.82
155	MOT12N70F	T0-220F	12	700	2~4.5	0.82
156	MOT12N70HF	T0-220F	12	700	2~4.5	0.82
157	MOT4N80D	T0-252	4	800	2~4	3.8
158	MOT4N80F	T0-220F	4	800	2~4	3.8
159	MOT6N80F	T0-220F	6	800	2~4	2.3
160	MOT7N80F	T0-220F	7	800	2~5	1.8
161	MOT8N80HF	T0-220F	9	800	2~4	1
162	MOT10N80HF	T0-220F	10	800	2~5	0.75
163	MOT12N80HSF	T0-220F	10	800	2~5	0.73
164	MOT14N80N	T0-247	14	800	2~4	0.72
165	MOT27N80N	T0-247	27	800	2~5	0.35
166	MOT3N90D	T0-252	3	900	2~5	4.75
167	MOT3N90F	T0-220F	3	900	2~5	4.75
168	MOT4N90D	T0-252	4	900	2~5	4.8
169	MOT4N90F	T0-220F	4	900	2~5	4.8
170	MOT6N90F	T0-220F	6	900	2~5	1.6
171	MOT9N90F	T0-220F	9	900	2~5	1.35
172	MOT9N90AF	T0-220F	9	900	2~4	1
173	MOT12N90N	T0-247	12	900	2~4	1
174	MOT12N90W	T0-247S	12	900	2~4	1
175	MOT18N90N	T0-247	18	900	2~4	0.78
176	MOT18N90W	T0-247S	18	900	2~4	0.78
177	MOT24N90N	T0-247	24	900	2~5	0.42
178	MOT24N90W	T0-247S	24	900	2~5	0.42
179	MOT1N100F	T0-220F	0.5	1000	2~4	55
180	MOT2N100D	T0-252	2	1000	2~4	8.8
181	MOT4N100D	T0-252	4	1000	2~4	2.5
182	MOT4N100F	T0-220F	4	1000	2~4	2.5
183	MOT6N100F	T0-220F	6	1000	2~5	2.3
184	MOT9N100F	T0-220F	9	1000	2~4	1.5
185	MOT10N100F	T0-220F	10	1000	2~5	1.25
186	MOT13N100F	T0-220F	13	1000	2~5	1.4
187	MOT24N100N	T0-247	24	1000	2~5	0.45
188	MOT3N120D	T0-252	3	1200	2~5	8
189	MOT3N120F	T0-220F	3	1200	2~5	8
190	MOT10N120F	T0-220F	10	1200	2~5	4.2
191	MOT10N120AF	T0-220F	10	1200	2~5	1.9
192	MOT3N150F	T0-220F	3	1500	2~5	8.2
193	MOT3N150V	T0-3PH	3	1500	2~5	8.2
194	MOT9N150N	T0-247	9	1500	2~5	4
195	MOT11N150N	T0-247	11	1500	2~5	3.7

产品选型表 Production Selection

高压SJ MOS(High-Voltage SJ Mosfet)

序号	Part-NO	Package Type	ID(A)	VD _{SS} [V]	VGS(th)(V)	R _{DS(on) (MAX)} (Ω)
2	MOT60R850D	T0-252	4.5	600	2-4	0.85
3	MOT60R600F	T0-220F	8	600	2-4	0.6
4	MOT60R600D	T0-252	8	600	2-4	0.6
5	MOT60R380F	T0-220F	11	600	2-4	0.38
6	MOT60R380D	T0-252	11	600	2-4	0.38
7	MOT60R280F	T0-220F	15	600	2-4	0.28
8	MOT60R280D	T0-252	15	600	2-4	0.28
9	MOT60R180HF	T0-220F	22	600	2-4	0.18
10	MOT60R120HF	T0-220F	33	600	2-4	0.12
11	MOT60R099HF	T0-220F	38	600	2-4	0.099
12	MOT60R070W	T0-247S	50	600	2-4	0.07
13	MOT60R040W	T0-247S	76	600	2-4	0.04
14	MOT60R028W	T0-247S	80	600	2-4	0.028
15	MOT65R1K2F	T0-220F	4	650	2-4	1.2
16	MOT65R1K2D	T0-252	4	650	2-4	1.2
17	MOT65R850F	T0-220F	4.5	650	2-4	0.9
18	MOT65R850D	T0-252	4.5	650	2-4	0.9
19	MOT65R600F	T0-220F	8	650	2-4	0.6
20	MOT65R600D	T0-252	8	650	2-4	0.6
21	MOT65R380F	T0-220F	11	650	2-4	0.38
22	MOT65R380D	T0-252	11	650	2-4	0.38
23	MOT65R280F	T0-220F	15	650	2-4	0.28
24	MOT65R280D	T0-252	15	650	2-4	0.28
25	MOT65R180HF	T0-220F	22	650	2-4	0.18
26	MOT65R120HF	T0-220F	33	650	2-4	0.12
27	MOT65R099HF	T0-220F	38	650	2-4	0.099
28	MOT65R099KF	T0-220F	38	650	2-4	0.099
29	MOT65R070W	T0-247S	50	650	2-4	0.07
30	MOT65R040W	T0-247S	76	650	2-4	0.04
31	MOT65R028W	T0-247S	80	650	2-4	0.028
32	MOT70R380F	T0-220F	11	700	2-4	0.38
33	MOT70R380D	T0-252	11	700	2-4	0.38
34	MOT70R600F	T0-220F	8	700	2-4	0.6
35	MOT70R600D	T0-252	8	700	2-4	0.6
36	MOT70R900F	T0-220F	4.5	700	2-4	0.9
37	MOT70R900D	T0-252	4.5	700	2-4	0.9
38	MOT70R1K4F	T0-220F	4	700	2-4	1.4
39	MOT70R1K4D	T0-252	4	700	2-4	1.4
40	MOT70R1K6F	T0-220F	3.5	700	2-4	1.6
41	MOT70R1K6D	T0-252	3.5	700	2-4	1.6
42	MOT80R290F	T0-220F	15	800	2-4	0.29
43	MOT80R290D	T0-252	15	800	2-4	0.29
44	MOT80R450F	T0-220F	11	800	2-4	0.45
45	MOT80R450D	T0-252	11	800	2-4	0.45
46	MOT80R650F	T0-220F	8	800	2-4	0.65
47	MOT80R650D	T0-252	8	800	2-4	0.65
48	MOT80R900F	T0-220F	4.5	800	2-4	0.9
49	MOT80R900D	T0-252	4.5	800	2-4	0.9
50	MOT80R1K2F	T0-220F	4	800	2-4	1.2
51	MOT80R1K2D	T0-252	4	800	2-4	1.2
52	MOT90R1K4F	T0-220F	4	900	2-4	1.49
53	MOT90R1K4D	T0-252	4	900	2-4	1.49
54	MOT65R4B4	SOT-23	2	650	2-4	5

中低压SGT MOS-TOLL(Low and Medium Voltage SGT Mosfet)

序号	Part-NO	Package	V _{GS(th)} (max)	ID(100°C)	VGS(th)(V)	R _{DS(on)} [mohm] at Vgs=								Qg [nC] at 10V	Qg [nC]	Qgd [nC]	Configuration	
						10V(V _{DS})	10V(max)	6V(V _{DS})	6V(max)	4.5V(V _{DS})	4.5V(max)	2.5V(V _{DS})	2.5V(max)					
1	MOT4111T	TOLL	40	300	3	1.05	1.10				2.00	2.50			321	58	33	Single_N
2	MOT4383T	TOLL	40	400	2	0.83	1.00				1.10	1.30			148	26	25	Single_N
3	MOT4566T	TOLL	40	400	2	0.60	0.70				1.80	0.95	1.10		124	38	31	Single_N
4	MOT4546T	TOLL	40	300	2.5	0.40	0.60				0.80	0.90			178	41	33	Single_N
5	MOT6120T	TOLL	60	229	3	1.50	2.00	2.40	2.70						254	59	31	Single_N
6	MOT6586T	TOLL	60	300	3	0.85	1.00	1.28	1.50						151	27	34	Single_N
7	MOT6556T	TOLL	60	400	3	0.50	0.60	0.98	1.15						145	47	34	Single_N
8	MOT8120T	TOLL	80	280	4	1.50	2.00		1.10						138	39	36	Single_N
9	MOT8576T	TOLL	80	500	4	0.70	0.85	1.10	1.25						138	39	36	Single_N
10	MOT8121T	TOLL	85	280	4	1.80	2.10								138	39	36	Single_N
11	MOT8113T	TOLL	85	300	4	1.10	1.40								240	56	60	Single_N
12	MOT1126T	TOLL	100	280	4	2.20	2.60								131	50	24.5	Single_N
13	MOT1120T	TOLL	100	280	4	1.60	2.00								131	50	24.5	Single_N
14	MOT1113T	TOLL	100	500	4	1.30	1.40	1.60	2.00						167	71	58	Single_N
15	MOT1111T	TOLL	100	450	4	1.00	1.10	1.40	1.80						284	73	85	Single_N
16	MOT5146T	TOLL	120	250	4	4.50	5.50	6.50	7.50						80	24	18	Single_N
17	MOT5130T	TOLL	120	211	4	2.80	3.20	3.40	3.90						157	47	37	Single_N
18	MOT5122T	TOLL	120	260	4	2.00	2.60	2.70	3.20						213	62	54	Single_N
19	MOT7146T	TOLL	150	220	4	4.50	5.00	5.00	6.00						158	48	39	Single_N
20	MOT7136T	TOLL	150	300	4	3.00	3.50	4.00	5.00						158	48	39	Single_N
21	MOT9166T	TOLL	200	114	4	6.00	7.10	6.40	7.80						186	58	31	Single_N
22	MOT9186T	TOLL	200	100	4	8.60	9.00								87	32	17.5	Single_N
23	MOT018N25T	TOLL	250	90	4	15.00	18.00								90.9	40.4	18	Single_N



产品选型表 Production Selection

中低压Trench SGT MOS (Low and Medium Voltage SGT/Trench Mosfet)

序号	Part-NO	Package	V _{DS(1)(25°C)}	ID _{SM(25°C)}	VGS(th) V _G (MAX)	R _{DS(on)} [mohm] at VGS=						Qg [nC] at 10V	Qgs [nC]	Qgd [nC]	Configuration
						10V (TYP)	10V (MAX)	4.5V (TYP)	4.5V (MAX)	2.5V (TYP)	2.5V (MAX)				
1	MOT40N02D	T0-252	20	40	1			8.3	9.5	12	14	32.5	2.5	11	Single_N
2	MOT40N02C	T0-251	20	40	1			8.3	9.5	12	14	32.5	2.5	11	Single_N
3	MOT50N02D	T0-252	20	50	1.1			7.2	8	11	13	26.4	3.9	7.75	Single_N
4	MOT50N02C	T0-251	20	50	1.1			7.2	8	11	13	26.4	3.9	7.75	Single_N
5	MOT60N02D	T0-252	20	60	1.1			6.5	8	7.8	9.7	35	3	10	Single_N
6	MOT60N02C	T0-251	20	60	1.1			6.5	8	7.8	9.7	35	3	10	Single_N
7	MOT90N02D	T0-252	20	90	1.1			4	5.5	6	17.5	15	3	4	Single_N
8	MOT90N02C	T0-251	20	90	1.1			4	5.5	6	17.5	15	3	4	Single_N
9	MOT90N02F	T0-220FP	20	90	1.1			4	5.5	6	17.5	15	3	4	Single_N
10	MOT90N02A	T0-220	20	90	1.1			4	5.5	6	17.5	15	3	4	Single_N
11	MOT20P02D	T0-252	-20	-20	-1			15	18	18	25	16	3	4	Single_P
12	MOT20P02C	T0-251	-20	-20	-1			15	18	18	25	16	3	4	Single_P
13	MOT50P02D	T0-252	-20	-50	-1.4			13	18	16.5	23	56	8	16	Single_P
14	MOT50P02C	T0-251	-20	-50	-1.4			13	18	16.5	23	56	8	16	Single_P
15	MOT50P02F	T0-220F	-20	-50	-1.4			13	18	16.5	23	56	8	16	Single_P
16	MOT50P02A	T0-220	-20	-50	-1.4			13	18	16.5	23	56	8	16	Single_P
17	MOT45N03D	T0-252	30	45	2	7	9	10	15			28	4	6	Single_N
18	MOT45N03C	T0-251	30	45	2	7	9	10	15			28	4	6	Single_N
19	MOT45N03F	T0-220F	30	45	2	7	9	10	15			28	4	6	Single_N
20	MOT45N03A	T0-220	30	50	2	8	10	10	15			28	4	6	Single_N
21	MOT50N03D	T0-252	30	50	2	8	10	10	13			23	7	4.5	Single_N
22	MOT50N03C	T0-251	30	50	2	8	10	10	13			23	7	4.5	Single_N
23	MOT50N03F	T0-220FP	30	50	2	8	10	10	13			23	7	4.5	Single_N
24	MOT50N03A	T0-220	30	50	2	8	10	10	13			23	7	4.5	Single_N
25	MOT60N03D	T0-252	30	60	3	6.5	9	10.5	15			32.3	4.9	6.9	Single_N
26	MOT60N03C	T0-251	30	60	3	6.5	9	10.5	15			32.3	4.9	6.9	Single_N
27	MOT60N03F	T0-220F	30	60	3	6.5	9	10.5	15			32.3	4.9	6.9	Single_N
28	MOT60N03A	T0-220	30	60	3	6.5	9	10.5	15			32.3	4.9	6.9	Single_N
29	MOT70N03D	T0-252	30	70	3	5.5	6.6	8	11.5			34	6.5	7.5	Single_N
30	MOT70N03C	T0-251	30	70	3	5.5	6.6	8	11.5			34	6.5	7.5	Single_N
31	MOT70N03F	T0-220FP	30	70	3	5.5	6.6	8	11.5			34	6.5	7.5	Single_N
32	MOT70N03A	T0-220	30	70	3	5.5	6.6	8	11.5			34	6.5	7.5	Single_N
33	MOT80N03D	T0-252	30	80	3	4.8	6	8	12			51	14	11	Single_N
34	MOT80N03C	T0-251	30	80	3	4.8	6	8	12			51	14	11	Single_N
35	MOT80N03F	T0-220F	30	80	3	4.8	6	8	12			51	14	11	Single_N
36	MOT80N03A	T0-220	30	80	3	4.8	6	8	12			51	14	11	Single_N
37	MOT90N03D	T0-252	30	90	3	4.6	5.5	6.5	8			67	13.7	10	Single_N
38	MOT90N03C	T0-251	30	90	3	4.6	5.5	6.5	8			67	13.7	10	Single_N
39	MOT90N03F	T0-220FP	30	90	3	4.6	5.5	6.5	8			67	13.7	10	Single_N
40	MOT90N03A	T0-220	30	90	3	4.6	5.5	6.5	8			67	13.7	10	Single_N
41	MOT100N03MD	T0-252	30	100	3	3.8	4.5	5.3	7.2			70	8.8	16.3	Single_N
42	MOT100N03MC	T0-251	30	100	3	3.8	4.5	5.3	7.2			70	8.8	16.3	Single_N
43	MOT120N03D	T0-252	30	120	3	3	3.5					79	9	18	Single_N
44	MOT120N03C	T0-251	30	120	3	3	3.5					79	9	18	Single_N
45	MOT120N03F	T0-220FP	30	120	3	3	3.5					79	9	18	Single_N

中低压Trench SGT MOS (Low and Medium Voltage SGT/Trench Mosfet)

序号	Part-NO	Package	V _{DS(1)(MAX)}	ID _{SM(25°C)}	VGS(th) V _G (MAX)	R _{DS(on)} [mohm] at VGS=						Qg [nC] at 10V	Qgs [nC]	Qgd [nC]	Configuration
						10V (TYP)	10V (MAX)	4.5V (TYP)	4.5V (MAX)	2.5V (TYP)	2.5V (MAX)				
46	MOT120N03A	T0-220	30	120	3	3	3.5					79	9	18	Single_N
47	MOT130N03D	T0-252	30	130	3	2.3	3.5	3.4	4.5			80	12.4	18.3	Single_N
48	MOT130N03C	T0-251	30	130	3	2.3	3.5	3.4	4.5			80	12.4	18.3	Single_N
49	MOT130N03F	T0-220F	30	130	3	2.3	3.5	3.4	4.5			80	12.4	18.3	Single_N
50	MOT130N03A	T0-220	30	130	3	2.3	3.5	3.4	4.5			80	12.4	18.3	Single_N
51	MOT150N03D	T0-252	30	130	3	1.9	2.5	2.6	3.3			114	22	19	Single_N
52	MOT150N03C	T0-251	30	130	3	1.9	2.5	2.6	3.3			114	22	19	Single_N
53	MOT150N03F	T0-220FP	30	130	3	1.9	2.5	2.6	3.3			114	22	19	Single_N
54	MOT150N03A	T0-220	30	130	3	1.9	2.5	2.6	3.3			114	22	19	Single_N
55	MOT50P03D	T0-252	-30	-50	-2.5	8.5	10					92.5	11.5	17	Single_P
56	MOT50P03C	T0-251	-30	-50	-2.5	8.5	10					92.5	11.5	17	Single_P
57	MOT3012D	T0-252-4L	30	30	2.5	9	11	10	13			17.5	3	4.1	N+P
			-30	-30	-2.5	11	15	15	20			28	3.2	8.5	N+P
58	MOT3021D	T0-252-4L	30	12	2.5	15	20	17	25			5.5	1.25	2.5	N+P
			-30	-11.5	-2.5	25	35	32	45			11	2.8	4	N+P
59	MOT3029D	T0-252-4L	30	12	2.5	15	25	23	32			5.5	1.25	2.5	N+P
			-30	-11.5	-2.5	25	35	32	45			11	2.8	4	N+P
60	MOT3114G	PDFN5X6	30	170	2	1.35	1.65	1.8	2.2			98	16	11	Single_N
61	MOT3132G	PDFN5X6	30	120	3	3	3.5					79	9	18	Single_N
62	MOT3134G	PDFN5X6	30	73	2.3	3	3.5	6	6.5			38	6	10	Single_N
63	MOT3150G	PDFN5X6	30	63.5	2.3	4.5	5	8	9			40	21	7	Single_N
64	MOT3160J	PDFN3X3	30	60	2.2	5.5	6	8.3	9.5			19.4	9.4	4	Single_N
65	MOT3165J	PDFN3X3	30	60	3	6.5	9	10.5	15			9.6	3.4	3.4	Single_N
66	MOT3195J	PDFN3X3	30	50	2	8.5	10	12	14			15	1.9	3.9	Single_N
67	MOT3512J	PDFN3X3	30	35	2.5	11.5	13	19	23			17.2	5	2.57	Single_N
68	MOT3380J	PDFN3X3	-30	-60	-2.5	8	11	15	20			22	8.7	7.2	Single_P
			30	20	2.5	10	14	15	18			22	2.8	5.2	N+P
69	MOT3617J	PDFN3X3	-30	-20	-2.5	16	20	22	25			28	3.2	8.5	N+P
70	MOT3713S	SOP8	-30	-14.5	-2.5	13	15	22	28			39	8	12	Single_P
71	MOT3816S	SOP8	-30	-13	-1.2	16	20	18	22			36	6.5	4.6	P+P
72	MOT3210J	PDFN3X3	30	10	2.5	9	11.5	12	16.5			7	2.9	2.4	N+N
73	MOT4025G	PDFN5X6	40	28	2	17	22	22	30			22.9	3.5	5.3	N+P
			-40	-15	-2	29	35	34	45			25	3	7	N+P
74	MOT4136G	PDFN5X6	40	80	3	3	3.5	6.5	7.5			50	12	13	Single_N
75	MOT4170J	PDFN3X3	40	45	2.5	6	7.2	10	12			48	10	10	Single_N
76	MOT4170G	PDFN5X6	40	45	2.5	6	7.2	10	12			48	10	10	Single_N
77	MOT4257G	PDFN5X6	40	43	2.5	6	7	7.5	9.5			19.4	3.1	3.5	N+N
			40	8	2.5	17	22	22	28			12	3.2	3.1	N+P
78	MOT4615S	SOP8	-40	-7.2	-2.4	44	50	54	65			8	2.1	3.6	N+P
79	MOT4617J	PDFN3X3	40	20	2.5	13	17	16	22			20	3.5	4.2	N+N
80	MOT20N06D	T0-252	60	20	3	40	50	55	65			20	3	3	Single_N
81	MOT20N06C	T0-251	60	20	3	40	50	55	65			20	3	3	Single_N
82	MOT30N06D	T0-252	60	30	2.5	25	30					30	4.5	7.5	Single_N
83	MOT30N06C	T0-251	60	30	2.5	25	30					30	4.5	7.5	Single_N
84	MOT50N06D	T0-252	60	50	2.5	13	18					39	7	8.5	Single_N
85	MOT50N06C	T0-251	60	50	2.5	13	18					39	7	8.5	Single_N
86	MOT50N06F	T0-220F	60	50	2.5	13	18					39	7	8.5	Single_N
87	MOT50N06A	T0-220	60	50	2.5	13	18					39	7	8.5	Single_N
88	MOT90N06D	T0-252	60	90	2.1	5.7	7.5	7.2	9.5			90	9	18	Single_N
89	MOT90N06C	T0-251	60	90	2.1	5.7	7.5	7.2	9.5			90	9	18	Single_N
90	MOT90N06F	T0-220FP	60	90	2.1	5.7	7.5	7.2	9.5			90	8	7	Single_N

产品选型表 Production Selection

中低压Trench SGT MOS (Low and Medium Voltage SGT/Trench Mosfet)

序号	Part-NO	Package	V _{DS(V)} (max)	ID(A)(25°C)	VGS(th) V _I (max)	R _{DS(on)} [mohm] at V _{GS} =					Q _g [nC] at 10V	Q _{gs} [nC]	Q _{gd} [nC]	Configuration
						10V (TYP)	10V (MAX)	4.5V (TYP)	4.5V (MAX)	2.5V (TYP)				
91	MOT90N06A	TO-220	60	90	2.1	5.7	7.5	7.2	9.5		90	8	7	Single_N
92	MOT6140G	PDFN5X6	60	80	2.2	3.5	4	6	7		74	17	9	Single_N
93	MOT6515J	PDFN3X3	60	50	3	15	18	18	22		62	7	18	Single_N
94	MOT6515G	PDFN5X6	60	50	3	15	18	18	22		62	7	18	Single_N
95	MOT6525J	PDFN3X3	60	30	3	23	30	30	40		29	1.2	5.4	Single_N
96	MOT6530J	PDFN3X3	60	20	3	25	35				20	3	0	Single_N
97	MOT6525G	PDFN5X6	60	30	3	23	30	30	40		29	1.2	5.4	Single_N
98	MOT6530G	PDFN5X6	60	20	3	25	35				20	3	0	Single_N
99	MOT45P06D	TO-252	-60	-45	-2.5	25	30	30	40		36.5	6.9	8.2	Single_P
100	MOT45P06C	TO-251	-60	-45	-2.5	25	30	30	40		36.5	6.9	8.2	Single_P
101	MOT75N75D	TO-252	75	75	3	8	10	10	12		100	20	30	Single_N
102	MOT75N75C	TO-251	75	75	3	8	10	10	12		100	20	30	Single_N
103	MOT75N75F	TO-220F	75	75	3	8	10	10	12		100	20	30	Single_N
104	MOT75N75A	TO-220	75	75	3	8	10	10	12		100	20	30	Single_N
105	MOT120N85D	TO-252	85	120	4	4.6	5.5				158	32	51	Single_N
106	MOT120N85C	TO-251	85	120	4	4.6	5.5				158	32	51	Single_N
107	MOT120N85F	TO-220FP	85	120	4	4.6	5.5				158	32	51	Single_N
108	MOT120N85A	TO-220	85	120	4	4.6	5.5				158	32	51	Single_N
109	MOT5N10D	TO-252	100	5	4	100	130	120	180		18	3.76	8.5	Single_N
110	MOT5N10C	TO-251	100	5	4	100	130	120	180		18	3.76	8.5	Single_N
111	MOT15N10D	TO-252	100	15	4	80	100				24	4.6	7.6	Single_N
112	MOT15N10C	TO-251	100	15	4	80	100				24	4.6	7.6	Single_N
113	MOT30N10D	TO-252	100	30	4	20	24	26	30		27.6	5.5	6.9	Single_N
114	MOT30N10C	TO-251	100	30	4	20	24	26	30		27.6	5.5	6.9	Single_N
115	MOT33N10D	TO-252	100	30	4	20	24	26	30		27.6	5.5	6.9	Single_N
116	MOT33N10C	TO-251	100	30	4	20	24	26	30		27.6	5.5	6.9	Single_N
117	MOT40N10D	TO-252	100	40	4	15	20	20	26		31	6.4	7.2	Single_N
118	MOT40N10C	TO-251	100	40	4	15	20	20	26		31	6.4	7.2	Single_N
119	MOT50N10D	TO-252	100	50	4	10	12.5	14.5	17		42	7.8	1.1	Single_N
120	MOT50N10C	TO-251	100	50	4	10	12.5	14.5	17		42	7.8	1.1	Single_N
121	MOT50N10F	TO-220F	100	50	4	10	12.5	14.5	17		42	7.8	1.1	Single_N
122	MOT50N10A	TO-220	100	50	4	10	12.5	14.5	17		42	7.8	1.1	Single_N
123	MOT30P10D	TO-252	-100	-30	-3	57	65	63	73		73	17	9.1	Single_P
124	MOT30P10C	TO-251	-100	-30	-3	57	65	63	73		73	17	9.1	Single_P
125	MOT180N10D	TO-252	100	180	3.5	2.7	3.3				108	37	21	Single_N
126	MOT180N10C	TO-251	100	180	3.5	2.7	3.3				108	37	21	Single_N
127	MOT180N10F	TO-220F	100	180	3.5	2.7	3.3				108	37	21	Single_N
128	MOT180N10A	TO-220	100	180	3.5	2.7	3.3				108	37	21	Single_N
129	MOT1145G	PDFN5X6	100	59	3	4	5	6	8		71	15	18	Single_N
130	MOT1165G	PDFN5X6	100	80	2.5	6.5	7.5	10	12.5		42.2	13	10	Single_N
131	MOT1180G	PDFN5X6	100	65	2.5	8.2	11	10.5	15		26	6.5	5.3	Single_N
132	MOT1512S	SOP8	100	40	2.5	13	15	17.5	22		37.6	6.5	9.5	Single_N
133	MOT1519G	PDFN5X6	100	30	2.5	19	26	22	28		67.2	9.4	15.5	Single_N
134	MOT5165G	PDFN5X6	120	90	3	6.2	8	8	10		55	10	16	Single_N
135	MOT3617G	PDFN5X6	30	20	2.5	10	14	15	18		22	2.8	5.2	N+P
			-30	-20	-2.5	16	20	22	25		28	3.2	8.5	N+P

中低压Trench SGT MOS (Low and Medium Voltage SGT/Trench Mosfet)

序号	Part-NO	Package	V _{DS(V)} (max)	ID(A)(25°C)	VGS(th) V _I (max)	R _{DS(on)} [mohm] at V _{GS} =					Q _g [nC] at 10V	Q _{gs} [nC]	Q _{gd} [nC]	Configuration	
						10V (TYP)	10V (MAX)	4.5V (TYP)	4.5V (MAX)	2.5V (TYP)					2.5V (MAX)
136	MOT3150J	PDFN3X3	30	63.5	2.5	4.5	5	8	9		40	21	7	Single_N	
137	MOT3728J	PDFN3X3	-30	-20	-2.5	22	28	33	44		10	2	2.7	Single_P	
138	MOT4037S	SOP8	40	28	2.5	17	22	22	30		22.9	3.5	5.3	N+P	
			-40	-15	-2.5	29	35	34	45		22.9	3.5	5.3	N+P	
139	MOT2514S	SOP8	20	12	1.2			8	14	11	21	42	10.8	9.2	Single_N
140	MOT2165S	SOP8	20	55	1.2			5.2	6.5	6.8	8.5	35	1	8.3	Single_N
141	MOT2155S	SOP8	20	60	1.1			3.5	5.5	4.5	7	23	4	7	Single_N
142	MOT2135S	SOP8	20	75	1.1			2.5	3.5	3.2	4.5	65	8	12	Single_N
143	MOT3520S	SOP8	30	8	1.5	13	20	19	29		19.4	2.5	5	Single_N	
144	MOT3510S	SOP8	30	25	1.5	7.5	10	14	19		32.3	4.9	6.9	Single_N	
145	MOT3180S	SOP8	30	40	1.6	5.5	8	9	13		32.3	4.9	6.9	Single_N	
146	MOT3145S	SOP8	30	95	1.5	2.8	4.5	4.5	7		38.4	5.8	7.9	Single_N	
147	MOT3140S	SOP8	30	110	1.6	2.5	4	4.5	7		66.3	7	17.2	Single_N	
148	MOT4529S	SOP8	40	9	2.5	22	29	28	40		22.9	3.9	5.3	Single_N	
149	MOT4522S	SOP8	40	15	2.5	15	22	20	30		60	8.1	16.9	Single_N	
150	MOT4513S	SOP8	40	40	2.5	10	13	15	19		40	4.4	10.3	Single_N	
151	MOT4180S	SOP8	40	60	2.5	6.5	8	9.5	13		29	4.5	6.4	Single_N	
152	MOT4160S	SOP8	40	90	2.5	4.2	6	6	8.5		90	14	22	Single_N	
153	MOT6568S	SOP8	60	7	2.5	56	68	65	78		7	2	2.5	Single_N	
154	MOT6529S	SOP8	60	20	2.5	22.5	29	28	38		50	6	15	Single_N	
155	MOT6511S	SOP8	60	35	3	9	11	14	19		22.6	4.7	3.7	Single_N	
156	MOT6160S	SOP8	60	50	3	5	6	8	11		34.8	7	5.3	Single_N	
157	MOT1592S	SOP8	100	7	3	68	92	100	150		7.2	1.3	1	Single_N	
158	MOT1525S	SOP8	100	20	3	20	25	27	38		11.4	2.7	3.4	Single_N	
159	MOT1514S	SOP8	100	38	2	11.6	14	16.5	22		14	4.3	6.8	Single_N	
160	MOT2718S	SOP8	-20	-10	-1.5			13	18	16.5	23	33.7	3.5	10.5	Single_P
161	MOT2378S	SOP8	-20	-45	-1.5			5.8	7.8	7.5	11	63.5	10	18	Single_P
162	MOT3390S	SOP8	-30	-30	-2.5	6.5	10	10	14		81.3	13.8	8.3	Single_P	
163	MOT3710S	SOP8	-30	-25	-2.5	7.5	10	11	14		45.6	4.6	11.1	Single_P	
164	MOT3712S	SOP8	-30	-20	-2.5	9.5	12	14	18		45.6	4.6	11.1	Single_P	
165	MOT3718S	SOP8	-30	-16	-2.5	14.5	18.5	21	27		31.2	3.2	9.2	Single_P	
166	MOT4733S	SOP8	-40	-15	-2.5	25	33	33	42		25	3	7	Single_P	
167	MOT4712S	SOP8	-40	-30	-2.5	10	12.5	13	17		68	10	14	Single_P	
168	MOT6727S	SOP8	-60	-30	-2.5	20	27	24	32		13.5	3.6	1.8	Single_P	
169	MOT2914S	SOP8	20	12	1.2			8	14	11	21	42	10.8	9.2	N+N
170	MOT2265S	SOP8	20	55	1.2			5.2	6.5	6.8	8.5	35	1	8.3	N+N
171	MOT3920S	SOP8	30	8	1.5	13	20	19	29		19.4	2.5	5	N+N	
172	MOT3910S	SOP8	30	25	1.5	7.5	10	14	19		32.3	4.9	6.9	N+N	
173	MOT4922S	SOP8	40	15	2.5	15	22	20	30		60	8.1	16.9	N+N	
174	MOT4913S	SOP8	40	40	2.5	10	13	15	19		40	4.4	10.3	N+N	
175	MOT6929S	SOP8	60	20	2.5	22.5	29	28	38		50	6	15	N+N	
176	MOT3818S	SOP8	-30	-16	-2.5	14.5	18.5	21	27		31.2	3.2	9.2	P+P	
177	MOT3650S	SOP8	30	8	1.5	13	20	19	29		19.4	2.5	5	N+P	
			-30	-7	-2.5	33	50	47	64		10	2	2.7		
178	MOT3628S	SOP8	30	25	1.5	7.5	10	14	19		32.3	4.9	6.9	N+P	
			-30	-20	-2.5	22	28	33	44		10	2	2.7		
179	MOT4648S	SOP8	40	15	2.5	15	22	20	30		60	8.1	16.9	N+P	
			-40	-15	-2.5	40	48	50	60		20	3.5	3.3		
180	MOT4633S	SOP8	40	40	2.5	10	13	15	19		40	4.4	10.3	N+P	
			-40	-15	-2.5	25	33	33	42		23	2.2	6.5		

产品选型表 Production Selection

中低压Trench SGT MOS (Low and Medium Voltage SGT/Trench Mosfet)

序号	Part-NO	Package	V _{DS(V)} (max)	ID(A)(25°C)	VGS(th)(V)(max)	R _{DS(on)} [mohm] at VGS=						Qg [nC] at 10V	Qgs [nC]	Qgd [nC]	Configuration
						10V (TYP)	10V (MAX)	4.5V (TYP)	4.5V (MAX)	2.5V (TYP)	2.5V (MAX)				
181	MOT2514J	PDFN3X3	20	12	1.2			8	14	11	21	42	10.8	9.2	Single_N
182	MOT2165J	PDFN3X3	20	55	1.2			5.2	6.5	6.8	8.5	35	1	8.3	Single_N
183	MOT2155J	PDFN3X3	20	60	1.1			3.5	5.5	4.5	7	23	4	7	Single_N
184	MOT2135J	PDFN3X3	20	75	1.1			2.5	3.5	3.2	4.5	65	8	12	Single_N
185	MOT3520J	PDFN3X3	30	8	1.5	13	20	19	29			19.4	2.5	5	Single_N
186	MOT3510J	PDFN3X3	30	25	1.5	7.5	10	14	19			32.3	4.9	6.9	Single_N
187	MOT3180J	PDFN3X3	30	40	1.6	5.5	8	9	13			32.3	4.9	6.9	Single_N
188	MOT3145J	PDFN3X3	30	95	1.5	2.8	4.5	4.5	7			38.4	5.8	7.9	Single_N
189	MOT3140J	PDFN3X3	30	110	1.6	2.5	4	4.5	7			66.3	7	17.2	Single_N
190	MOT4529J	PDFN3X3	40	9	2.5	22	29	28	40			22.9	3.9	5.3	Single_N
191	MOT4522J	PDFN3X3	40	15	2.5	15	22	20	30			60	8.1	16.9	Single_N
192	MOT4513J	PDFN3X3	40	40	2.5	10	13	15	19			40	4.4	10.3	Single_N
193	MOT4180J	PDFN3X3	40	60	2.5	6.5	8	9.5	13			29	4.5	6.4	Single_N
194	MOT4160J	PDFN3X3	40	90	2.5	4.2	6	6	8.5			90	14	22	Single_N
195	MOT6568J	PDFN3X3	60	7	2.5	56	68	65	78			7	2	2.5	Single_N
196	MOT6529J	PDFN3X3	60	20	2.5	22.5	29	28	38			50	6	15	Single_N
197	MOT6511J	PDFN3X3	60	35	3	9	11	14	19			22.6	4.7	3.7	Single_N
198	MOT6160J	PDFN3X3	60	50	3	5	6	8	11			34.8	7	5.3	Single_N
199	MOT1592J	PDFN3X3	100	7	3	68	92	100	150			7.2	1.3	1	Single_N
200	MOT1525J	PDFN3X3	100	20	3	20	25	27	38			11.4	2.7	3.4	Single_N
201	MOT1514J	PDFN3X3	100	38	2	11.6	14	16.5	22			14	4.3	6.8	Single_N
202	MOT2718J	PDFN3X3	-20	-10	-1.5			13	18	16.5	23	33.7	3.5	10.5	Single_P
203	MOT2378J	PDFN3X3	-20	-45	-1.5			5.8	7.8	7.5	11	63.5	10	18	Single_P
204	MOT3390J	PDFN3X3	-30	-30	-2.5	6.5	10	10	14			81.3	13.8	8.3	Single_P
205	MOT3710J	PDFN3X3	-30	-25	-2.5	7.5	10	11	14			45.6	4.6	11.1	Single_P
206	MOT3712J	PDFN3X3	-30	-20	-2.5	9.5	12	14	18			45.6	4.6	11.1	Single_P
207	MOT3718J	PDFN3X3	-30	-16	-2.5	14.5	18.5	21	27			31.2	3.2	9.2	Single_P
208	MOT4733J	PDFN3X3	-40	-15	-2.5	25	33	33	42			25	3	7	Single_P
209	MOT4712J	PDFN3X3	-40	-30	-2.5	10	12.5	13	17			68	10	14	Single_P
210	MOT6727J	PDFN3X3	-60	-30	-2.5	20	27	24	32			13.5	3.6	1.8	Single_P
211	MOT2914J	PDFN3X3	20	12	1.2			8	14	11	21	42	10.8	9.2	N+N
212	MOT2265J	PDFN3X3	20	55	1.2			5.2	6.5	6.8	8.5	35	1	8.3	N+N
213	MOT3920J	PDFN3X3	30	8	1.5	13	20	19	29			19.4	2.5	5	N+N
214	MOT3910J	PDFN3X3	30	25	1.5	7.5	10	14	19			32.3	4.9	6.9	N+N
215	MOT4922J	PDFN3X3	40	15	2.5	15	22	20	30			60	8.1	16.9	N+N
216	MOT4913J	PDFN3X3	40	40	2.5	10	13	15	19			40	4.4	10.3	N+N
217	MOT6929J	PDFN3X3	60	20	2.5	22.5	29	28	38			50	6	15	N+N
218	MOT3818J	PDFN3X3	-30	-16	-2.5	14.5	18.5	21	27			31.2	3.2	9.2	P+P
219	MOT3650J	PDFN3X3	30	8	1.5	13	20	19	29			19.4	2.5	5	N+P
		PDFN3X3	-30	-7	-2.5	33	50	47	64			10	2	2.7	N+P
221	MOT3628J	PDFN3X3	30	25	1.5	7.5	10	14	19			32.3	4.9	6.9	N+P
			-30	-20	-2.5	22	28	33	44			10	2	2.7	N+P
223	MOT4648J	PDFN3X3	40	15	2.5	15	22	20	30			60	8.1	16.9	N+P
			-40	-15	-2.5	40	48	50	60			20	3.5	3.3	N+P
225	MOT4633J	PDFN3X3	40	40	2.5	10	13	15	19			40	4.4	10.3	N+P
			-40	-15	-2.5	25	33	33	42			23	2.2	6.5	N+P

中低压Trench SGT MOS (Low and Medium Voltage SGT/Trench Mosfet)

序号	Part-NO	Package	V _{DS(V)} (max)	ID(A)(25°C)	VGS(th)(V)(max)	R _{DS(on)} [mohm] at VGS=						Qg [nC] at 10V	Qgs [nC]	Qgd [nC]	Configuration
						10V (TYP)	10V (MAX)	4.5V (TYP)	4.5V (MAX)	2.5V (TYP)	2.5V (MAX)				
226	MOT2165G	PDFN5X6	20	55	1.2			5.2	6.5	6.8	8.5	35	1	8.3	Single_N
227	MOT2155G	PDFN5X6	20	60	1.1			3.5	5.5	4.5	7	23	4	7	Single_N
228	MOT2135G	PDFN5X6	20	75	1.1			2.5	3.5	3.2	4.5	65	8	12	Single_N
229	MOT3520G	PDFN5X6	30	8	1.5	13	20	19	29			19.4	2.5	5	Single_N
230	MOT3510G	PDFN5X6	30	25	1.5	7.5	10	14	19			32.3	4.9	6.9	Single_N
231	MOT3180G	PDFN5X6	30	40	1.6	5.5	8	9	13			32.3	4.9	6.9	Single_N
232	MOT3145G	PDFN5X6	30	95	1.5	2.8	4.5	4.5	7			38.4	5.8	7.9	Single_N
233	MOT3140G	PDFN5X6	30	110	1.6	2.5	4	4.5	7			66.3	7	17.2	Single_N
234	MOT3128G	PDFN5X6	30	140	2.5	2	2.8	3.8	5			80	12.4	18.3	Single_N
235	MOT4529G	PDFN5X6	40	9	2.5	22	29	28	40			22.9	3.9	5.3	Single_N
236	MOT4522G	PDFN5X6	40	15	2.5	15	22	20	30			60	8.1	16.9	Single_N
237	MOT4513G	PDFN5X6	40	40	2.5	10	13	15	19			40	4.4	10.3	Single_N
238	MOT4180G	PDFN5X6	40	60	2.5	6.5	8	9.5	13			29	4.5	6.4	Single_N
239	MOT4160G	PDFN5X6	40	90	2.5	4.2	6	6	8.5			90	14	22	Single_N
240	MOT6568G	PDFN5X6	60	7	2.5	56	68	65	78			7	2	2.5	Single_N
241	MOT6529G	PDFN5X6	60	20	2.5	22.5	29	28	38			50	6	15	Single_N
242	MOT6511G	PDFN5X6	60	35	3	9	11	14	19			22.6	4.7	3.7	Single_N
243	MOT6160G	PDFN5X6	60	50	3	5	6	8	11			34.8	7	5.3	Single_N
244	MOT1592G	PDFN5X6	100	7	3	68	92	100	150			7.2	1.3	1	Single_N
245	MOT1525G	PDFN5X6	100	20	3	20	25	27	38			11.4	2.7	3.4	Single_N
246	MOT1514G	PDFN5X6	100	38	2	11.6	14	16.5	22			14	4.3	6.8	Single_N
247	MOT2378G	PDFN5X6	-20	-45	-1.5			5.8	7.8	7.5	11	63.5	10	18	Single_P
248	MOT3365G	PDFN5X6	-30	-75	-2.5	4.8	6.5	7	9			30	6	8	Single_P
249	MOT3710G	PDFN5X6	-30	-25	-2.5	7.5	10	11	14			45.6	4.6	11.1	Single_P
250	MOT3712G	PDFN5X6	-30	-20	-2.5	9.5	12	14	18			45.6	4.6	11.1	Single_P
251	MOT3718G	PDFN5X6	-30	-16	-2.5	14.5	18.5	21	27			31.2	3.2	9.2	Single_P
252	MOT3728G	PDFN5X6	-30	-20	-2.5	22	28	33	44			10	2	2.7	Single_P
253	MOT4733G	PDFN5X6	-40	-15	-2.5	25	33	33	42			23	2.2	6.5	Single_P
254	MOT4719G	PDFN5X6	-40	-20	-2.5	13.5	19	17	23			54	8	11	Single_P
255	MOT4712G	PDFN5X6	-40	-30	-2.5	10	12.5	13	17			68	10	14	Single_P
256	MOT4710G	PDFN5X6	-40	-70	-2.5	7.2	10	9.2	13			106	22	27	Single_P
257	MOT6727G	PDFN5X6	-60	-30	-2.5	20	27	24	32			13.5	3.6	1.8	Single_P
258	MOT6715G	PDFN5X6	-60	-820	-2.5	12.5	15	15	19			62.1	9.3	16.8	Single_P
259	MOT2914G	PDFN5X6	20	12	1.2			8	14	11	21	42	10.8	9.2	N+N
260	MOT2265G	PDFN5X6	20	55	1.2			5.2	6.5	6.8	8.5	35	1	8.3	N+N
261	MOT3920G	PDFN5X6	30	8	1.5	13	20	19	29			19.4	2.5	5	N+N
262	MOT3910G	PDFN5X6	30	25	1.5	7.5	10	14	19			32.3	4.9	6.9	N+N
263	MOT4922G	PDFN5X6	40	15	2.5	15	22	20	30			60	8.1	16.9	N+N
264	MOT4913G	PDFN5X6	40	40	2.5	10	13	15	19			40	4.4	10.3	N+N
265	MOT6929G	PDFN5X6	60	20	2.5	22.5	29	28	38			50	6	15	N+N
266	MOT3818G	PDFN5X6	-30	-16	-2.5	14.5	18.5	21	27			31.2	3.2	9.2	P+P
267	MOT2618G	PDFN5X6	20	55	1.2			5.2	6.5	6.8	8.5	35	1	8.3	N+P
			-20	-13	-1.2			13	18	16.5	23	40	6	12	N+P
268	MOT3628G	PDFN5X6	30	8	1.5	13	20	19	29			19.4	2.5	5	N+P
			-30	-20	-2.5	22	28	33	44			10	2	2.7	N+P
269	MOT3618G	PDFN5X6	30	25	1.5	7.5	10	14	19			32.3	4.9	6.9	N+P
			-30	-16	-2.5	14.5	18.5	21	27			31.2	3.2	9.2	N+P



产品选型表 Production Selection

平面肖特基二极管(Planar Schottky Diode)

序号	Part-NO	Package	IF (AV) (A)	VRRM (V)	VF (V)典型值	IR< (uA)	IFSM (A)
1	MBR1045A	T0-220	10	45	0.54	20	100
2	MBR1045E	T0-263	10	45	0.54	20	100
3	MBR1045F	T0-220F	10	45	0.54	20	100
4	MOT1045C	T0-251	10	45	0.54	20	100
5	MOT1045D	T0-252	10	45	0.54	20	100
6	MBR1060A	T0-220	10	60	0.65	15	100
7	MBR1060E	T0-263	10	60	0.65	15	100
8	MBR1060F	T0-220F	10	60	0.65	15	100
9	MOT1060C	T0-251	10	60	0.65	15	100
10	MOT1060D	T0-252	10	60	0.65	15	100
11	MBR10100A	T0-220	10	100	0.79	2	100
12	MBR10100E	T0-263	10	100	0.79	2	100
13	MBR10100F	T0-220F	10	100	0.79	2	100
14	MOT10100C	T0-251	10	100	0.79	2	100
15	MOT10100D	T0-252	10	100	0.79	2	100
16	MBR10150A	T0-220	10	150	0.835	2	100
17	MBR10150E	T0-263	10	150	0.835	2	100
18	MBR10150F	T0-220F	10	150	0.835	2	100
19	MOT10150C	T0-251	10	150	0.835	2	100
20	MOT10150D	T0-252	10	150	0.835	2	100
21	MBR10200A	T0-220	10	200	0.85	2	100
22	MBR10200E	T0-263	10	200	0.85	2	100
23	MBR10200F	T0-220F	10	200	0.85	2	100
24	MOT10200C	T0-251	10	200	0.85	2	100
25	MOT10200D	T0-252	10	200	0.85	2	100
26	MBR2045A	T0-220	20	45	0.59	30	150
27	MBR2045E	T0-263	20	45	0.59	30	150
28	MBR2045F	T0-220F	20	45	0.59	30	150
29	MOT2045C	T0-251	20	45	0.59	30	150
30	MOT2045D	T0-252	20	45	0.59	30	150
31	MBR2060A	T0-220	20	60	0.71	20	150
32	MBR2060E	T0-263	20	60	0.71	20	150
33	MBR2060F	T0-220F	20	60	0.71	20	150
34	MOT2060C	T0-251	20	60	0.71	20	150
35	MOT2060D	T0-252	20	60	0.71	20	150
36	MBR20100A	T0-220	20	100	0.81	2	150
37	MBR20100E	T0-263	20	100	0.81	2	150
38	MBR20100F	T0-220F	20	100	0.81	2	150
39	MOT20100C	T0-251	20	100	0.81	2	150
40	MOT20100D	T0-252	20	100	0.81	2	150
41	MBR20150A	T0-220	20	150	0.86	2	150
42	MBR20150E	T0-263	20	150	0.86	2	150
43	MBR20150F	T0-220F	20	150	0.86	2	150
44	MOT20150C	T0-251	20	150	0.86	2	150
45	MOT20150D	T0-252	20	150	0.86	2	150

平面肖特基二极管(Planar Schottky Diode)

序号	Part-NO	Package	IF (AV) (A)	VRRM (V)	VF (V)典型值	IR< (uA)	IFSM (A)
46	MBR20200A	T0-220	20	200	0.9	2	190
47	MBR20200E	T0-263	20	200	0.9	2	190
48	MBR20200F	T0-220F	20	200	0.9	2	190
49	MOT20200C	T0-251	20	200	0.9	2	190
50	MOT20200D	T0-252	20	200	0.9	2	190
51	MBR3045A	T0-220	30	45	0.59	50	200
52	MBR3045E	T0-263	30	45	0.59	50	200
53	MBR3045F	T0-220F	30	45	0.59	50	200
54	MOT3045C	T0-251	30	45	0.59	50	200
55	MOT3045D	T0-252	30	45	0.59	50	200
56	MBR3045W	T0-247S	30	45	0.59	50	200
57	MBR3060A	T0-220	30	60	0.72	10	250
58	MBR3060E	T0-263	30	60	0.72	10	250
59	MBR3060F	T0-220F	30	60	0.72	10	250
60	MBR3060Q	T0-3PB	30	60	0.72	10	250
61	MBR3060W	T0-247S	30	60	0.72	10	250
62	MBR30100A	T0-220	30	100	0.84	5	200
63	MBR30100E	T0-263	30	100	0.84	5	200
64	MBR30100F	T0-220F	30	100	0.84	5	200
65	MBR30100Q	T0-3PB	30	100	0.84	5	200
66	MBR30100W	T0-247S	30	100	0.84	5	200
67	MBR30150A	T0-220	30	150	0.88	2	200
68	MBR30150E	T0-263	30	150	0.88	2	200
69	MBR30150F	T0-220F	30	150	0.88	2	200
70	MBR30150Q	T0-3PB	30	150	0.88	2	200
71	MBR30150W	T0-247S	30	150	0.88	2	200
72	MBR30200A	T0-220	30	200	0.92	2	200
73	MBR30200E	T0-263	30	200	0.92	2	200
74	MBR30200F	T0-220F	30	200	0.92	2	200
75	MBR30200Q	T0-3PB	30	200	0.92	2	200
76	MBR30200W	T0-247S	30	200	0.92	2	200
77	MBR4045A	T0-220	40	45	0.56	50	250
78	MBR4045E	T0-263	40	45	0.56	50	250
79	MBR4045F	T0-220F	40	45	0.56	50	250
80	MBR4045Q	T0-3PB	40	45	0.56	50	250
81	MBR4045W	T0-247S	40	45	0.56	50	250
82	MBR4060A	T0-220	40	60	0.72	40	250
83	MBR4060E	T0-263	40	60	0.72	40	250
84	MBR4060F	T0-220F	40	60	0.72	40	250
85	MBR4060Q	T0-3PB	40	60	0.72	40	250
86	MBR4060W	T0-247S	40	60	0.72	40	250
87	MBR40100A	T0-220	40	100	0.82	5	250
88	MBR40100E	T0-263	40	100	0.82	5	250
89	MBR40100F	T0-220F	40	100	0.82	5	250
90	MBR40100Q	T0-3PB	40	100	0.82	5	250

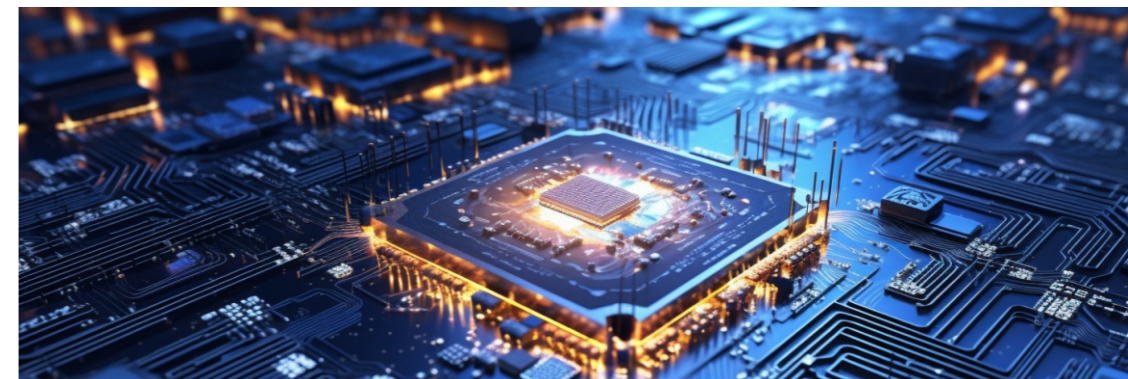
产品选型表 Production Selection

平面肖特基二极管(Planar Schottky Diode)

序号	Part-NO	Package	IF (AV) (A)	VRRM (V)	VF (V)典型值	IR< (uA)	IFSM (A)
91	MBR40100W	T0-247S	40	100	0.82	5	250
92	MBR40150A	T0-220	40	150	0.87	5	250
93	MBR40150E	T0-263	40	150	0.87	5	250
94	MBR40150F	T0-220F	40	150	0.87	5	250
95	MBR40150Q	T0-3PB	40	150	0.87	5	250
96	MBR40150W	T0-247S	40	150	0.87	5	250
97	MBR40200A	T0-220	40	200	0.9	2	250
98	MBR40200E	T0-263	40	200	0.9	2	250
99	MBR40200F	T0-220F	40	200	0.9	2	250
100	MBR40200Q	T0-3PB	40	200	0.9	2	250
101	MBR40200W	T0-247S	40	200	0.9	2	250
102	MBR6045A	T0-220	60	45	0.65	50	300
103	MBR6045E	T0-263	60	45	0.65	50	300
104	MBR6045F	T0-220F	60	45	0.65	50	300
105	MBR6045Q	T0-3PB	60	45	0.65	50	300
106	MBR6045W	T0-247S	60	45	0.65	50	300
107	MBR6060A	T0-220	60	60	0.72	40	300
108	MBR6060E	T0-263	60	60	0.72	40	300
109	MBR6060F	T0-220F	60	60	0.72	40	300
110	MBR6060Q	T0-3PB	60	60	0.72	40	300
111	MBR6060W	T0-247S	60	60	0.72	40	300
112	MBR60100A	T0-220	60	100	0.84	5	300
113	MBR60100E	T0-263	60	100	0.84	5	300
114	MBR60100F	T0-220F	60	100	0.84	5	300
115	MBR60100Q	T0-3PB	60	100	0.84	5	300
116	MBR60100W	T0-247S	60	100	0.84	5	300
117	MBR60150A	T0-220	60	150	0.9	5	300
118	MBR60150E	T0-263	60	150	0.9	5	300
119	MBR60150F	T0-220F	60	150	0.9	5	300
120	MBR60150Q	T0-3PB	60	150	0.9	5	300
121	MBR60150W	T0-247S	60	150	0.9	5	300
122	MBR60200A	T0-220	60	200	0.92	2	300
123	MBR60200E	T0-263	60	200	0.92	2	300
124	MBR60200F	T0-220F	60	200	0.92	2	300
125	MBR60200Q	T0-3PB	60	200	0.92	2	300
126	MBR60200W	T0-247S	60	200	0.92	2	300

沟槽肖特基二极管(Trench Schottky Diode)

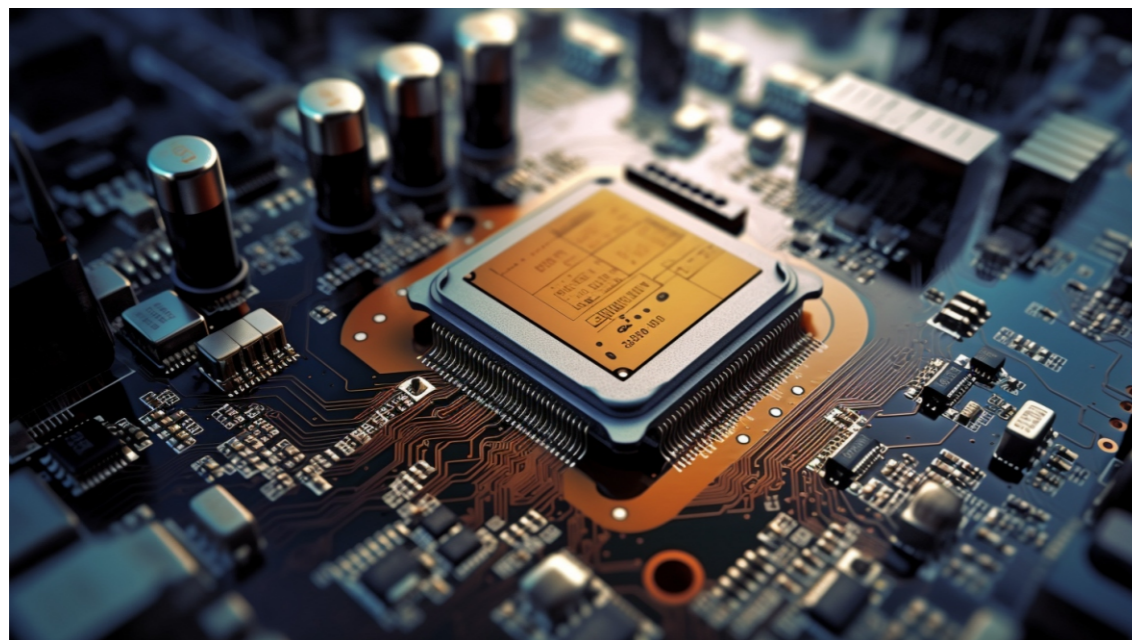
序号	Part-NO	Package	IF (AV) (A)	VRRM (V)	VF (V)典型值	IR< (uA)	IFSM (A)
1	MBR1060UA	T0-220	10	60	0.56	20	100
2	MBR1060UE	T0-263	10	60	0.56	20	100
3	MBR1060UF	T0-220F	10	60	0.56	20	100
4	MOT1060UC	T0-251	10	60	0.56	20	100
5	MOT1060UD	T0-252	10	60	0.56	20	100
6	MBR10100UA	T0-220	10	100	0.6	20	100
7	MBR10100UE	T0-263	10	100	0.6	20	100
8	MBR10100UF	T0-220F	10	100	0.6	20	100
9	MOT10100UC	T0-251	10	100	0.6	20	100
10	MOT10100UD	T0-252	10	100	0.6	20	100
11	MBR2045UA	T0-220	20	45	0.47	50	150
12	MBR2045UE	T0-263	20	45	0.47	50	150
13	MBR2045UF	T0-220F	20	45	0.47	50	150
14	MOT2045UC	T0-251	20	45	0.47	50	150
15	MOT2045UD	T0-252	20	45	0.47	50	150
16	MBR2060UA	T0-220	20	60	0.49	50	150
17	MBR2060UE	T0-263	20	60	0.49	50	150
18	MBR2060UF	T0-220F	20	60	0.49	50	150
19	MOT2060UC	T0-251	20	60	0.49	50	150
20	MOT2060UD	T0-252	20	60	0.49	50	150
21	MBR20100UA	T0-220	20	100	0.67	15	150
22	MBR20100UE	T0-263	20	100	0.67	15	150
23	MBR20100UF	T0-220F	20	100	0.67	15	150
24	MOT20100UC	T0-251	20	100	0.67	15	150
25	MOT20100UD	T0-252	20	100	0.67	15	150



产品选型表 Production Selection

沟槽肖特基二极管(Trench Schottky Diode)

序号	Part-NO	Package	IF(AV) (A)	VRRM(V)	VF(V)典型值	IR<(uA)	IFSM(A)
26	MBR20150UA	T0-220	20	150	0.79	2	150
27	MBR20150UE	T0-263	20	150	0.79	2	150
28	MBR20150UF	T0-220F	20	150	0.79	2	150
29	MOT20150UD	T0-252	20	150	0.79	2	150
30	MBR20200UA	T0-220	20	200	0.83	2	150
31	MBR20200UE	T0-263	20	200	0.83	2	150
32	MBR20200UF	T0-220F	20	200	0.83	2	150
33	MOT20200UD	T0-252	20	200	0.83	2	150
34	MBR3045UA	T0-220	30	45	0.5	80	200
35	MBR3045UE	T0-263	30	45	0.5	80	200
36	MBR3045UF	T0-220F	30	45	0.5	80	200
37	MOT3045UD	T0-252	30	45	0.5	80	200
38	MBR30100UA	T0-220	30	100	0.7	20	200
39	MBR30100UE	T0-263	30	100	0.7	20	200
40	MBR30100UF	T0-220F	30	100	0.7	20	200
41	MOT30100UD	T0-252	30	100	0.7	20	200
42	MBR30150UA	T0-220	30	100	0.84	10	200
43	MBR30150UE	T0-263	30	100	0.84	10	200
44	MBR30150UF	T0-220F	30	100	0.84	10	200
45	MOT30150UD	T0-252	30	100	0.84	10	200
46	MBR40100UA	T0-220	40	100	0.76	20	250
47	MBR40100UE	T0-263	40	100	0.76	20	250
48	MBR40100UF	T0-220F	40	100	0.76	20	250



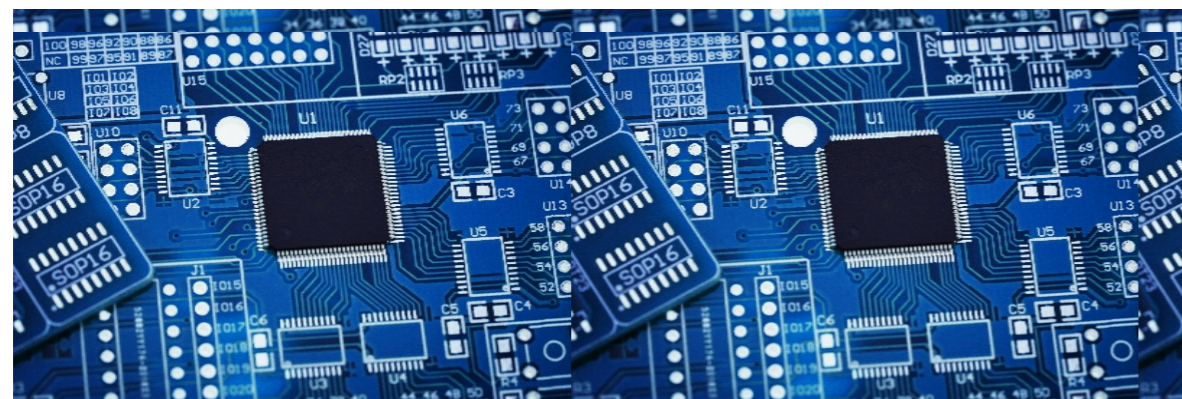
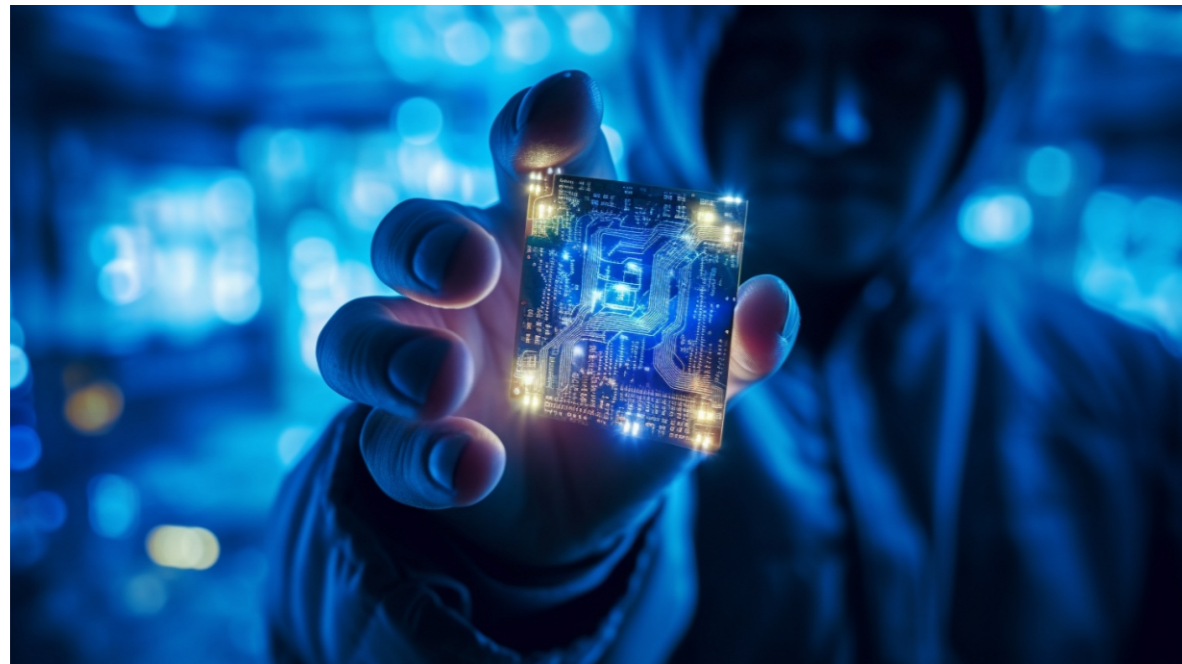
快恢复二极管(Fast Recovery Diode)

序号	Part-NO	Package	IF(AV) (A)	VRRM(V)	VF(V)典型值	IR<(uA)	Trr<(nS)
1	MUR1002A	T0-220	10	200	1.1	1	35
2	MUR1002E	T0-263	10	200	1.1	1	35
3	MUR1002F	T0-220F	10	200	1.1	1	35
4	MUR1004A	T0-220	10	400	1.3	1	35
5	MUR1040F	T0-220F	10	400	1.3	1	35
6	MUR1004E	T0-263	10	400	1.3	1	35
7	MUR1004F	T0-220F	10	400	1.3	1	35
8	MUR1006A	T0-220	10	600	1.5	1	35
9	MUR1006E	T0-263	10	600	1.5	1	35
10	MUR1006F	T0-220F	10	600	1.5	1	35
11	MUR12C20A	T0-220	12	200	1.3	1	35
12	MUR12C20E	T0-263	12	200	1.3	1	35
13	MUR12C20F	T0-220F	12	200	1.3	1	35
14	MUR12C40A	T0-220	12	400	1.5	1	35
15	MUR12C40E	T0-263	12	400	1.5	1	35
16	MUR12C40F	T0-220F	12	400	1.5	1	35
17	MUR12C60A	T0-220	12	600	1.5	1	35
18	MUR12C60E	T0-263	12	600	1.5	1	35
19	MUR12C60F	T0-220F	12	600	1.5	1	35
20	MUR16C20A	T0-220	16	200	1.1	1	35
21	MUR16C20E	T0-263	16	200	1.1	1	35
22	MUR16C20F	T0-220F	16	200	1.1	1	35
23	MUR16C40A	T0-220	16	400	1.3	1	35
24	MUR16C40E	T0-263	16	400	1.3	1	35
25	MUR16C40F	T0-220F	16	400	1.3	1	35
26	MUR16C60A	T0-220	16	600	1.5	1	35
27	MUR16C60E	T0-263	16	600	1.5	1	35
28	MUR1660F	T0-220F	16	600	1.5	1	35
29	MUR2002A	T0-220	20	200	1.1	1	35
30	MUR2002E	T0-263	20	200	1.1	1	35
31	MUR2002F	T0-220F	20	200	1.1	1	35
32	MUR2040A	T0-220	20	400	1.3	1	35
33	MUR2040E	T0-263	20	400	1.3	1	35
34	MUR2040F	T0-220F	20	400	1.3	1	35
35	MUR2060A	T0-220	20	600	1.5	1	35
36	MUR2060E	T0-263	20	600	1.5	1	35
37	MUR2060F	T0-220F	20	600	1.5	1	35

产品选型表 Production Selection

小信号开关二极管(Small Signal Switching Diode)

序号	Part-NO	MARKING	Package	IF(AV) (mA)	VRRM(V)	Vf(V)典型值	Ir<(uA)	IFSM(A)
1	4148W	T4	SOD123	150	100	1.25	1	2
2	4148WS	T4	SOD323	150	100	1.25	1	2
3	5817W	SJ	SOD123	1000	20	0.75	1000	9
4	5817WS	SJ	SOD323	1000	20	0.75	1000	9
5	5819W	SL	SOD123	1000	40	0.9	1000	9
6	5819WS	SL	SOD323	1000	40	0.9	1000	9
7	BAV21W	T3	SOD123	200	250	1.25	0.1	0.4
8	BAV21W	T3	SOD323	200	250	1.25	0.1	0.4



稳压二极管(Voltage-Regulator Diode)

序号	Part-NO	MARKING	Package	Vf(V)	PD(Mw)	VZ(V)典型值	Ir<(uA)	VR(V)
1	BZT52C2V4T1G	WX	SOD123	0.85	500	2.4	50	1
2	BZT52C2V7T1G	W1	SOD123	0.85	500	2.7	20	1
3	BZT52C3V0T1G	W2	SOD123	0.85	500	3	10	1
4	BZT52C3V3T1G	W3	SOD123	0.85	500	3.3	5	1
5	BZT52C3V6T1G	W4	SOD123	0.85	500	3.6	5	1
6	BZT52C3V9T1G	W5	SOD123	0.85	500	3.9	0.5	1
7	BZT52C4V3T1G	W6	SOD123	0.85	500	4.3	0.5	1
8	BZT52C4V7T1G	W7	SOD123	0.85	500	4.7	3	2
9	BZT52C5V1T1G	W8	SOD123	0.85	500	5.1	2	2
10	BZT52C5V6T1G	W9	SOD123	0.85	500	5.6	1	2
11	BZT52C6V2T1G	WA	SOD123	0.85	500	6.2	2.4	4
12	BZT52C6V8T1G	WB	SOD123	0.85	500	6.8	1.6	4
13	BZT52C7V5T1G	WC	SOD123	0.85	500	7.5	0.8	5
14	BZT52C8V2T1G	WD	SOD123	0.85	500	8.2	0.56	5
15	BZT52C9V1T1G	WE	SOD123	0.85	500	9.1	0.4	7
16	BZT52C10T1G	WF	SOD123	0.85	500	10	0.1	8
17	BZT52C11T1G	WG	SOD123	0.85	500	11	0.1	8
18	BZT52C12T1G	WH	SOD123	0.85	500	12	0.1	8
19	BZT52C13T1G	WI	SOD123	0.85	500	13	0.1	8
20	BZT52C15T1G	WJ	SOD123	0.85	500	15	0.1	11
21	BZT52C16T1G	WK	SOD123	0.85	500	16	0.1	11
22	BZT52C18T1G	WL	SOD123	0.85	500	18	0.1	13
23	BZT52C20T1G	WM	SOD123	0.85	500	20	0.1	14
24	BZT52C22T1G	WN	SOD123	0.85	500	22	0.1	15
25	BZT52C24T1G	WO	SOD123	0.85	500	24	0.1	17
26	BZT52C27T1G	WP	SOD123	0.85	500	27	0.04	19
27	BZT52C30T1G	WQ	SOD123	0.85	500	30	0.04	21
28	BZT52C33T1G	WR	SOD123	0.85	500	33	0.04	23
29	BZT52C36T1G	WS	SOD123	0.85	500	36	0.04	25
30	BZT52C39T1G	WT	SOD123	0.85	500	39	0.04	27
31	BZT52C43T1G	WU	SOD123	0.85	500	43	0.04	30
32	BZT52C47T1G	WV	SOD123	0.85	500	47	0.04	33
33	BZT52C51T1G	WW	SOD123	0.85	500	51	0.04	36
34	BZT52C56T1G	XW	SOD123	0.85	500	56	0.04	39
35	BZT52C62T1G	6E	SOD123	0.85	500	62	0.04	43
36	BZT52C68T1G	6F	SOD123	0.85	500	68	0.04	48
37	BZT52C75T1G	6H	SOD123	0.85	500	75	0.04	53
38	BZT52C2V4S	WX	SOD323	0.85	200	2.4	50	1
39	BZT52C2V7S	W1	SOD323	0.85	200	2.7	20	1
40	BZT52C3V0S	W2	SOD323	0.85	200	3	10	1

产品选型表 Production Selection

稳压二极管(Voltage-Regulator Diode)

序号	Part-NO	MARKING	Package	VF (V)	PD (Mw)	VZ (V)典型值	Ir<(uA)	VR (V)
41	BZT52C3V3S	W3	SOD323	0.85	200	3.3	5	1
42	BZT52C3V6S	W4	SOD323	0.85	200	3.6	5	1
43	BZT52C3V9S	W5	SOD323	0.85	200	3.9	0.5	1
44	BZT52C4V3S	W6	SOD323	0.85	200	4.3	0.5	1
45	BZT52C4V7S	W7	SOD323	0.85	200	4.7	3	2
46	BZT52C5V1S	W8	SOD323	0.85	200	5.1	2	2
47	BZT52C5V6S	W9	SOD323	0.85	200	5.6	1	2
48	BZT52C6V2S	WA	SOD323	0.85	200	6.2	2.4	4
49	BZT52C6V8S	WB	SOD323	0.85	200	6.8	1.6	4
50	BZT52C7V5S	WC	SOD323	0.85	200	7.5	0.8	5
51	BZT52C8V2S	WD	SOD323	0.85	200	8.2	0.56	5
52	BZT52C9V1S	WE	SOD323	0.85	200	9.1	0.4	7
53	BZT52C10S	WF	SOD323	0.85	200	10	0.1	8
54	BZT52C11S	WG	SOD323	0.85	200	11	0.1	8
55	BZT52C12S	WH	SOD323	0.85	200	12	0.1	8
56	BZT52C13S	WI	SOD323	0.85	200	13	0.1	8
57	BZT52C15S	WJ	SOD323	0.85	200	15	0.1	11
58	BZT52C16S	WK	SOD323	0.85	200	16	0.1	11
59	BZT52C18S	WL	SOD323	0.85	200	18	0.1	13
60	BZT52C20S	WM	SOD323	0.85	200	20	0.1	14
61	BZT52C22S	WN	SOD323	0.85	200	22	0.1	15
62	BZT52C24S	WO	SOD323	0.85	200	24	0.1	17
63	BZT52C27S	WP	SOD323	0.85	200	27	0.04	19
64	BZT52C30S	WQ	SOD323	0.85	200	30	0.04	21
65	BZT52C33S	WR	SOD323	0.85	200	33	0.04	23
66	BZT52C36S	WS	SOD323	0.85	200	36	0.04	25
67	BZT52C39S	WT	SOD323	0.85	200	39	0.04	27
68	BZT52C43S	WT	SOD323	0.85	200	43	0.04	30
69	BZT52C47S	WV	SOD323	0.85	200	47	0.04	33
70	BZT52C51S	WW	SOD323	0.85	200	51	0.04	36
71	BZT52C56S	XW	SOD323	0.85	200	56	0.04	39
72	BZT52C62S	6E	SOD323	0.85	200	62	0.04	43
73	BZT52C68S	6F	SOD323	0.85	200	68	0.04	48
74	BZT52C75S	6H	SOD323	0.85	200	75	0.04	53
75	BZX584C2V4	00	SOD523	0.85	150	2.4	50	1
76	BZX584C2V7	01	SOD523	0.85	150	2.7	20	1
77	BZX584C3V0	02	SOD523	0.85	150	3	10	1
78	BZX584C3V3	05	SOD523	0.85	150	3.3	5	1
79	BZX584C3V6	Z15	SOD523	0.85	150	3.6	5	1
80	BZX584C3V9	07	SOD523	0.85	150	3.9	0.5	1

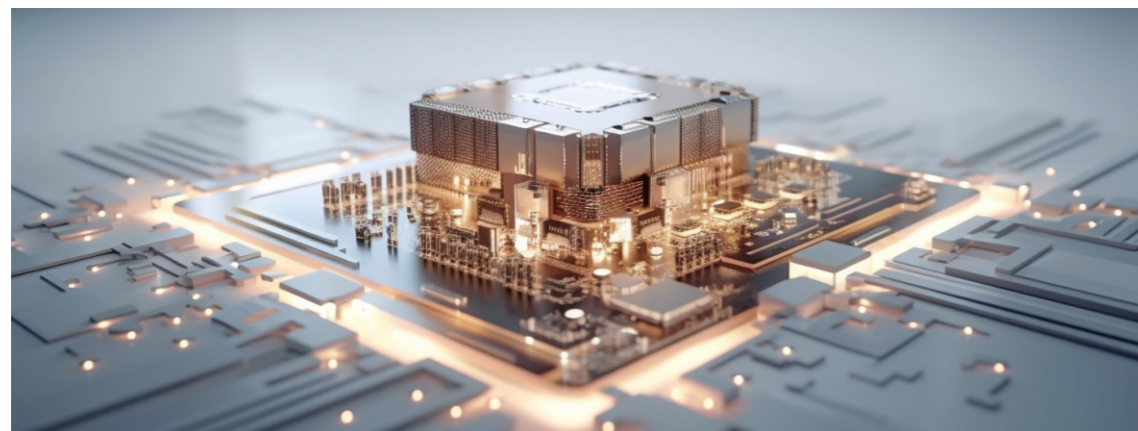
稳压二极管(Voltage-Regulator Diode)

序号	Part-NO	MARKING	Package	VF (V)	PD (Mw)	VZ (V)典型值	Ir<(uA)	VR (V)
81	BZX584C4V3	08	SOD523	0.85	150	4.3	0.5	1
82	BZX584C4V7	09	SOD523	0.85	150	4.7	3	2
83	BZX584C5V1	0A	SOD523	0.85	150	5.1	2	2
84	BZX584C5V6	W9	SOD523	0.85	150	5.6	1	2
85	BZX584C6V2	0E	SOD523	0.85	150	6.2	2.4	4
86	BZX584C6V8	Z5	SOD523	0.85	150	6.8	1.6	4
87	BZX584C7V5	0G	SOD523	0.85	150	7.5	0.8	5
88	BZX584C8V2	0H	SOD523	0.85	150	8.2	0.56	5
89	BZX584C9V1	0K	SOD523	0.85	150	9.1	0.4	7
90	BZX584C10	0L	SOD523	0.85	150	10	0.1	8
91	BZX584C11	0M	SOD523	0.85	150	11	0.1	8
92	BZX584C12	0N	SOD523	0.85	150	12	0.1	8
93	BZX584C13	Y3	SOD523	0.85	150	13	0.1	8
94	BZX584C15	0T	SOD523	0.85	150	15	0.1	11
95	BZX584C16	0U	SOD523	0.85	150	16	0.1	11
96	BZX584C18	0W	SOD523	0.85	150	18	0.1	13
97	BZX584C20	0Z	SOD523	0.85	150	20	0.1	14
98	BZX584C22	10	SOD523	0.85	150	22	0.1	15
99	BZX584C24	11	SOD523	0.85	150	24	0.1	17
100	BZX584C27	12	SOD523	0.85	150	27	0.04	19
101	BZX584C30	14	SOD523	0.85	150	30	0.04	21
102	BZX584C33	Y12	SOD523	0.85	150	33	0.04	23
103	BZX584C36	Y13	SOD523	0.85	150	36	0.04	25
104	BZX584C39	Y14	SOD523	0.85	150	39	0.04	27
105	BZX584C43	Y15	SOD523	0.85	150	43	0.04	30
106	BZX584C47	V1	SOD523	0.85	150	47	0.04	33
107	BZX584C51	V2	SOD523	0.85	150	51	0.04	36
108	BZX584C56	V3	SOD523	0.85	150	56	0.04	39
109	BZX584C62	V4	SOD523	0.85	150	62	0.04	43
110	BZX584C68	V5	SOD523	0.85	150	68	0.04	48
111	BZX584C75	V6	SOD523	0.85	150	75	0.04	53
112	BZX84C2V4	Z11	SOT-23	0.85	225	2.4	50	1
113	BZX84C2V7	Z12	SOT-23	0.85	225	2.7	20	1
114	BZX84C3V0	Z13	SOT-23	0.85	225	3	10	1
115	BZX84C3V3	Z14	SOT-23	0.85	225	3.3	5	1
116	BZX84C3V6	Z15	SOT-23	0.85	150	3.6	5	1
117	BZX84C3V9	Z16	SOT-23	0.85	225	3.9	0.5	1
118	BZX84C4V3	Z17	SOT-23	0.85	225	4.3	0.5	1
119	BZX84C4V7	Z1	SOT-23	0.85	225	4.7	3	2
120	BZX84C5V1	Z2	SOT-23	0.85	225	5.1	2	2

产品选型表 Production Selection

稳压二极管(Voltage-Regulator Diode)

序号	Part-N0	MARKING	Package	VF (V)	PD (Mw)	VZ (V)典型值	Ir< (uA)	VR (V)
121	BZX84C5V6	Z3	SOT-23	0.85	225	5.6	1	2
122	BZX84C6V2	Z4	SOT-23	0.85	225	6.2	2.4	4
123	BZX84C6V8	Z5	SOT-23	0.85	225	6.8	1.6	4
124	BZX84C7V5	Z6	SOT-23	0.85	225	7.5	0.8	5
125	BZX84C8V2	Z7	SOT-23	0.85	225	8.2	0.56	5
126	BZX84C9V1	Z8	SOT-23	0.85	225	9.1	0.4	7
127	BZX84C10	Z9	SOT-23	0.85	225	10	0.1	8
128	BZX84C11	Y1	SOT-23	0.85	225	11	0.1	8
129	BZX84C12	Y2	SOT-23	0.85	225	12	0.1	8
130	BZX84C13	Y3	SOT-23	0.85	225	13	0.1	8
131	BZX84C15	Y4	SOT-23	0.85	225	15	0.1	11
132	BZX84C16	Y5	SOT-23	0.85	225	16	0.1	11
133	BZX84C18	Y6	SOT-23	0.85	225	18	0.1	13
134	BZX84C20	Y7	SOT-23	0.85	225	20	0.1	14
135	BZX84C22	Y8	SOT-23	0.85	225	22	0.1	15
136	BZX84C24	Y9	SOT-23	0.85	225	24	0.1	17
137	BZX84C27	Y10	SOT-23	0.85	225	27	0.04	19
138	BZX84C30	Y11	SOT-23	0.85	225	30	0.04	21
139	BZX84C33	Y12	SOT-23	0.85	225	33	0.04	23
140	BZX84C36	Y13	SOT-23	0.85	225	36	0.04	25
141	BZX84C39	Y14	SOT-23	0.85	225	39	0.04	27
142	BZX84C43	Y15	SOT-23	0.85	225	43	0.04	30
143	BZX84C47	V1	SOT-23	0.85	225	47	0.04	33
144	BZX84C51	V2	SOT-23	0.85	225	51	0.04	36
145	BZX84C56	V3	SOT-23	0.85	225	56	0.04	39
146	BZX84C62	V4	SOT-23	0.85	225	62	0.04	43
147	BZX84C68	V5	SOT-23	0.85	225	68	0.04	48
148	BZX84C75	V6	SOT-23	0.85	225	75	0.04	53



大功率三极管(High-Power Transistor)

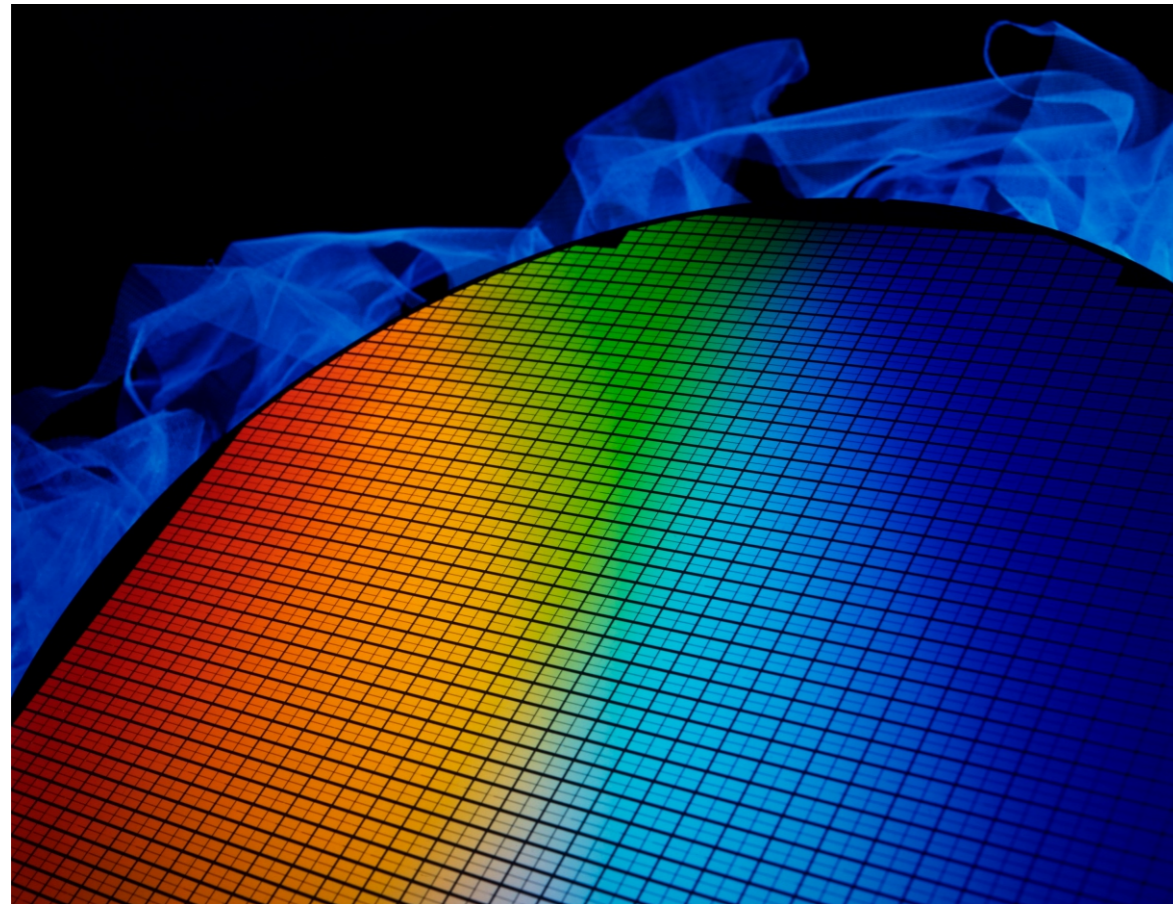
序号	Part-N0	Package	BVCBO (V)	BVCEO (V)	BVEB (V)	HFE	TS (nS)
1	MOT13005DA	TO-220	700	400	6	20-30	2-5
2	MOT13005DE	TO-263	700	400	6	20-30	2-5
3	MOT13005DF	TO-220F	700	400	6	20-30	2-5
4	MOT13005DQ	TO-3PB	700	400	6	20-30	2-5
5	MOT13005DW	TO-247S	700	400	6	20-30	2-5
6	MOT13007MA	TO-220	700	400	6	20-30	2-7
7	MOT13007ME	TO-263	700	400	6	20-30	2-7
8	MOT13007MF	TO-220F	700	400	6	20-30	2-7
9	MOT13007MQ	TO-3PB	700	400	6	20-30	2-7
10	MOT13007MW	TO-247S	700	400	6	20-30	2-7
11	MOT13009DA	TO-220	700	400	6	20-35	2-8
12	MOT13009DE	TO-263	700	400	6	20-35	2-8
13	MOT13009DF	TO-220F	700	400	6	20-35	2-8
14	MOT13009DQ	TO-3PB	700	400	6	20-35	2-8
15	MOT13009DW	TO-247S	700	400	6	20-35	2-8
16	2SC3320W	TO-247S	500	400	7	20-80	-
17	2SC3998	TO-3PL	1500	800	6	20-35	-



产品选型表 Production Selection

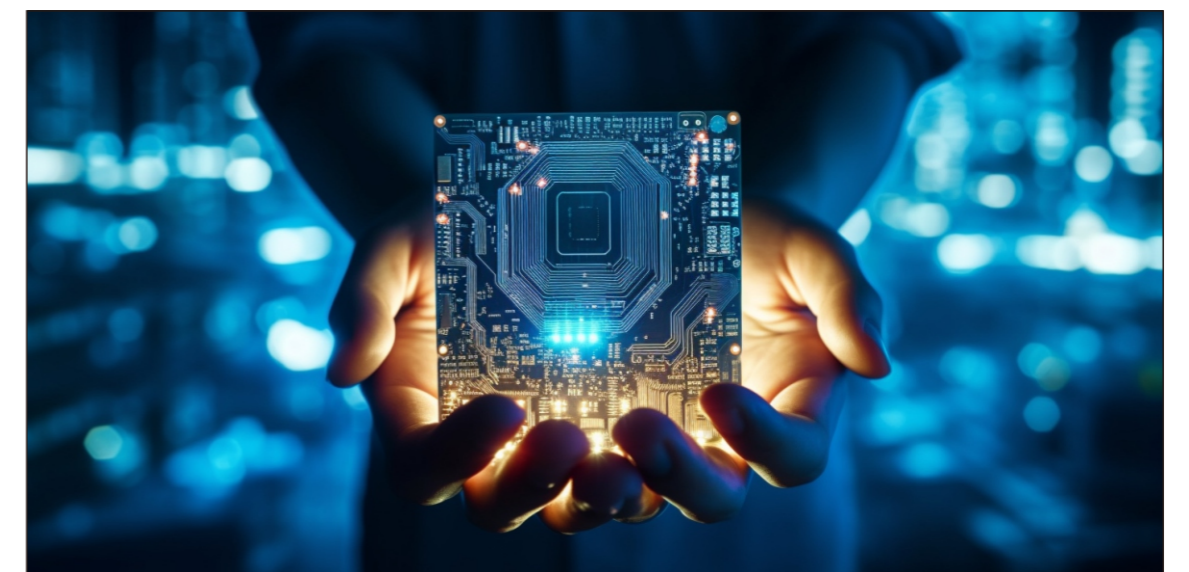
小信号三极管(Small Signal Transistor)

序号	Part-NO	MARKING	Package	IC(mA)	PC(mW)	BVCBO(V)	BVCEO(V)	BVEB(V)
1	MMBT3904	1AM	SOT-23	200	225	60	40	6
2	MMBT3906	2A	SOT-23	200	200	-40	-40	-5
3	MMBT5551	G1	SOT-23	600	225	180	160	6
4	MMBT5401	2L	SOT-23	-600	225	-160	-150	-5
5	MMBT2222A	1P	SOT-23	600	225	75	40	6
6	MMBT2907	2F	SOT-23	-600	225	-60	-60	-6
7	S8050	J3Y	SOT-23	500	300	40	25	5
8	S8050B	J3Y	SOT-23	350	300	40	25	5
9	S8050C	J3Y	SOT-23	200	300	40	25	5
10	S8550	2TY	SOT-23	-500	300	-40	-25	-5
11	S8550B	2TY	SOT-23	-350	300	-40	-25	-5
12	S8550C	2TY	SOT-23	-200	300	-40	-25	-5
13	SS8050	Y1	SOT-23	1500	300	40	25	5
14	SS8550	Y2	SOT-23	-1500	300	-40	-25	-5
15	S9012	2T1	SOT-23	-500	300	-40	-25	-5
16	S9015	M6	SOT-23	-500	600	-40	-25	-5
17	S9014	J6	SOT-23	150	225	50	45	5
18	S9013	J3	SOT-23	500	625	40	20	5



小信号MOS(Small Signal Mosfet)

序号	Part-NO	MARKING	Package	V _{GS(th)} (V)	I _{D(on)} (mA)	V _{GS(th)} (V)	R _{ds(on)} [mohm] at V _{GS} =						Q _g [nC] at 10V	Q _{gs} [nC]	Q _{gd} [nC]	Configuration
							10V (TYP)	10V (MAX)	4.5V (TYP)	4.5V (MAX)	2.5V (TYP)	2.5V (MAX)				
1	MOT2302	A2SHB	SOT-23	20	2	1.2			55	60	80	110	4	0.65	1.5	Single_N
2	MOT2302A	A2SHB	SOT-23	20	2	1.2			35	40	60	80	4	0.65	1.5	
3	MOT2302	A2SHB	SOT-23A-3L	20	2	1.2			55	60	80	110	4	0.65	1.5	Single_N
4	MOT2302A	A2SHB	SOT-23A-3L	20	2	1.2			35	40	60	80	4	0.65	1.5	
5	MOT2301	A1SHB	SOT-23	-20	-3	-1			120	160	170	230	5.8	0.85	1.7	Single_P
6	MOT2301A	A1SHB	SOT-23	-20	-3	-1			80	120	120	160	5.8	0.85	1.7	
7	MOT2301	A1SHB	SOT-23A-3L	-20	-3	-1			120	160	170	230	5.8	0.85	1.7	Single_P
8	MOT2301A	A1SHB	SOT-23A-3L	-20	-3	-1			80	120	120	160	5.8	0.85	1.7	
9	MOT2305	2305	SOT-23	-20	-4.2	-1.2			35	40	80	90	12.5	2.5	1.8	Single_P
	MOT2305	2305	SOT-23A-3L	-20	-4.2	-1.2			35	40	80	90	12.5	2.5	1.8	Single_P
10	MOT3400A	A09T	SOT-23	30	5.8	1.4	22	30	24	35	31	40				Single_N
11	MOT3400	A09T	SOT-23	30	4	1.4	26	32	27	35	31	40				Single_N
12	MOT3400A	A09T	SOT-23A-3L	30	5.8	1.4	22	30	24	35	31	40				Single_N
13	MOT3400	A09T	SOT-23A-3L	30	4	1.4	26	32	27	35	31	40				Single_N
14	MOT3410		SOT-23A-3L	30	13	1.4	11	15	18	25			9.8	4.2	3.6	Single_N
15	MOT3401A	A19T	SOT-23	-30	-4.2	-1.3	42	64	64	75	80	120	9.4	2	3	Single_P
16	MOT3401	A19T	SOT-23	-30	-4.2	-1.3	45	65	65	80	80	120	9.4	2	3	Single_P
17	MOT3401A	A19T	SOT-23A-3L	-30	-4.2	-1.3	42	64	64	75	80	120	9.4	2	3	Single_P
18	MOT3401	A19T	SOT-23A-3L	-30	-4.2	-1.3	45	65	65	80	80	120	9.4	2	3	
19	MOT4667A6	MOT4667	SOT-23A-6L	40	6.1	2.5	27	34	31	46			5	1.54	1.84	N+P
20	MOT2310	6003	SOT-23	60	3	2	66	86	89	115			7.5	1.4	3	Single_N
21	MOT2310	6003	SOT-23A-3L	60	3	2	66	86	89	115			7.5	1.4	3	Single_N
22	MOT2N102	2N10	SOT-23	100	2	3	260	320	320	380			13	35	2	Single_N
23	MOT2N103	MOT2N10	SOT-23A-3L	100	2	3	260	320	320	380			13	35	2	Single_N
24	MOT3N10B2	3N10	SOT-23	100	3	3	220	300	280	350			18.2	3	4.1	Single_N
25	MOT3N10	MOT3N10	SOT-23A-3L	100	3	3	220	300	280	350			18.2	3	4.1	Single_N
26	MOT5N10B2	5N10	SOT-23	100	5	3	100	130	120	180			18	3.76	8.5	Single_N
27	MOT5N10A3	MOT5N10	SOT-23A-3L	100	5	3	100	130	120	180			18	3.76	8.5	Single_N
29	MOT1N50A3	MOT1N50	SOT-23A-3L	500V	1	3.5	500	10000					12	5	9	Single_N
30	MOT1N50Q3	MOT1N50	SOT-89	500V	1	3.5	500	10000					12	5	9	Single_N
31	MOT8205A	8205A	SOT-23A-6L	20	6	1.5	17	24	23	32			8.4	1	1.8	N+N
32	MOT8205S	8205S	SOT-23A-6L	20	6	1.5	20	25	27	35			8.4	1	1.8	N+N
33	MOT2N7002	7002K	SOT-23	60	0.38	2.45	1800	2200	2000	2400						Single_N

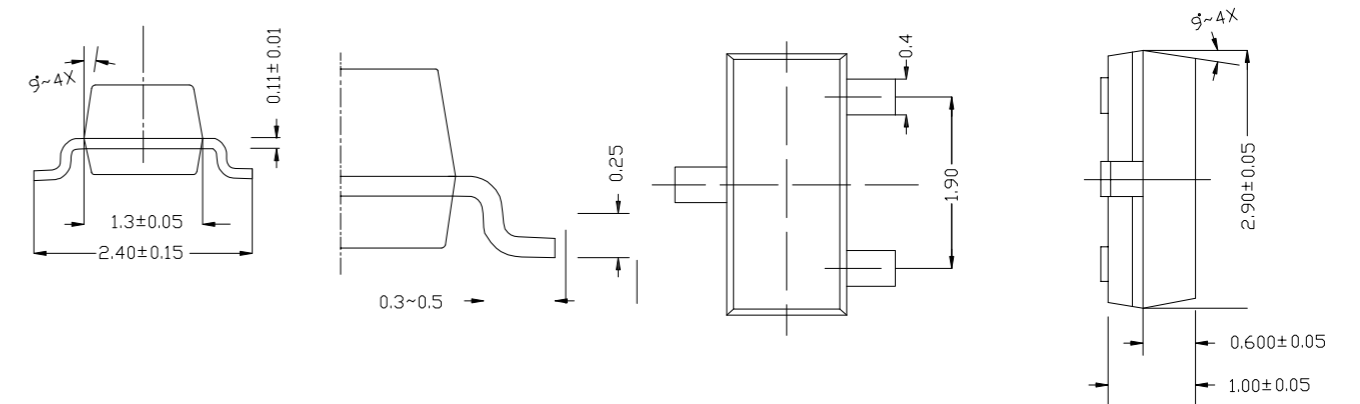


产品选型表 Production Selection

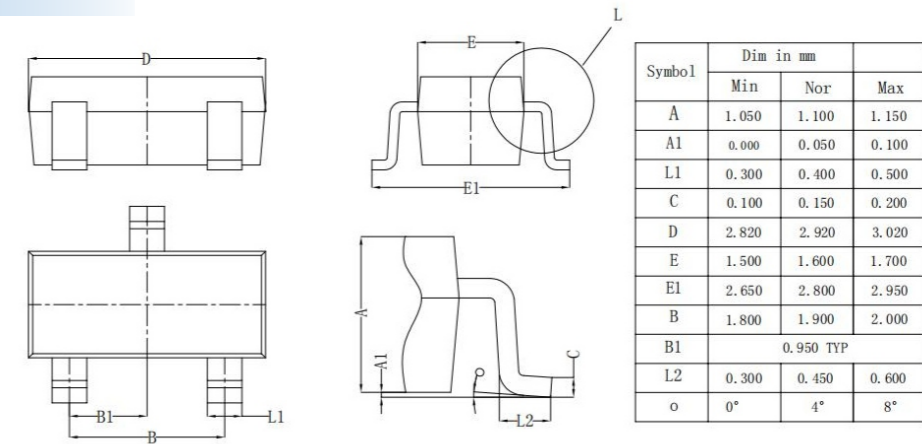
音响对管(Bipolar Transistor)

序号	Part-NO	IC(A)	PC(W)	V _{CE0} (V)	V _{CE0} (V)	V _{EB} (V)	HFE	Package
1	2SB688	-10	80	-120	-120	-5	80-160	T0-3PN
2	2SD718	10	80	120	120	5	80-160	T0-3PN
3	C4793	1	20	230	230	5	100-320	T0-220/220F
4	A1837	-1	20	-230	-230	-5	100-320	T0-220/220F
5	MJE15033	-8	50	-250	-250	-5	50-200	T0-220F
6	MJE15032	8	50	250	250	5	50-200	T0-220F
7	MJE15033	-8	50	-250	-250	-5	50-200	T0-220
8	MJE15032	8	50	250	250	5	50-200	T0-220
9	NJW0281G	15	120	250	250	5	75-150	T0-3PB
10	NJW0302G	-15	120	-250	-250	-5	75-150	T0-3PB
11	NJW0281G	15	140	250	250	5	75-150	T0-3PB
12	NJW0302G	-15	140	-250	-250	-5	75-150	T0-3PB
13	NJW0281G	15	160	250	250	5	75-150	T0-3PB
14	NJW0302G	-15	160	-250	-250	-5	75-150	T0-3PB
15	TIP35C	25	125	100	100	5	15-75	T0-247S
16	TIP36C	-25	125	-100	-100	-5	15-75	T0-247S
17	TIP35C	25	125	100	100	5	15-75	T0-3PN
18	TIP36C	-25	125	-100	-100	-5	15-75	T0-3PN
19	2SA1941	-10	40	-140	-140	-5	80-160	T0-3PN
20	2SC5198	10	40	140	140	5	80-160	T0-3PN
21	2SA1941	-10	60	-140	-140	-5	80-160	T0-3PN
22	2SC5198	10	60	140	140	5	80-160	T0-3PN
23	2SA1941	-10	80	-140	-140	-5	80-160	T0-3PN
24	2SC5198	10	80	140	140	5	80-160	T0-3PN
25	2SA1941	-10	100	-140	-140	-5	80-160	T0-3PN
26	2SC5198	10	100	140	140	5	80-160	T0-3PN
27	2SA1941	-10	120	-140	-140	-5	80-160	T0-3PN
28	2SC5198	10	120	140	140	5	80-160	T0-3PN
29	TTA1943	-15	130	-230	-230	-5	80-160	T0-3PL
30	TTC5200	15	130	230	230	5	80-160	T0-3PL
31	2SC5200	15	150	230	230	5	80-160	T0-3PL
32	2SA1943	-15	150	-230	-230	-5	80-160	T0-3PL
33	2SC5200	15	180	230	230	5	80-160	T0-3PL
34	2SA1943	-15	180	-230	-230	-5	80-160	T0-3PL

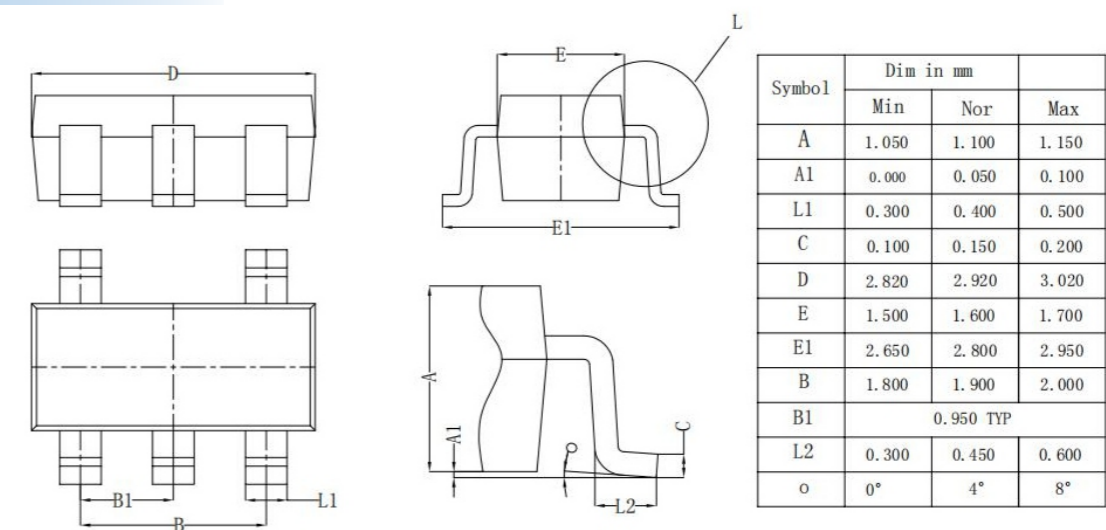
SOT-23



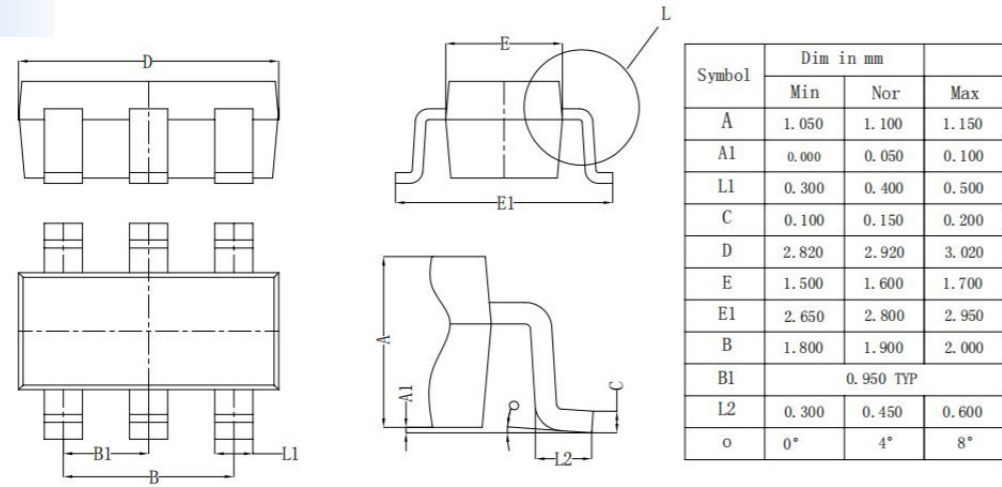
SOT-23-3L



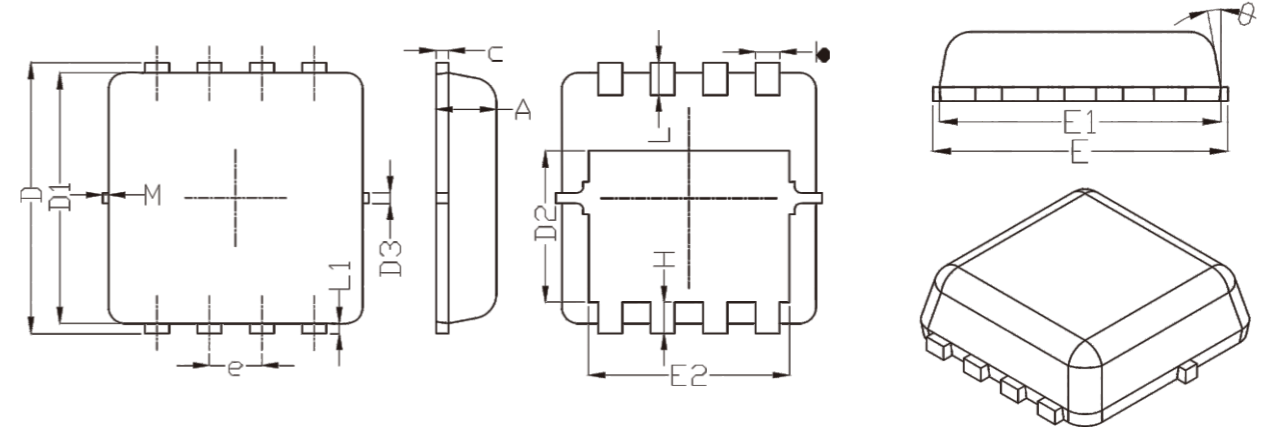
SOT-23-5L



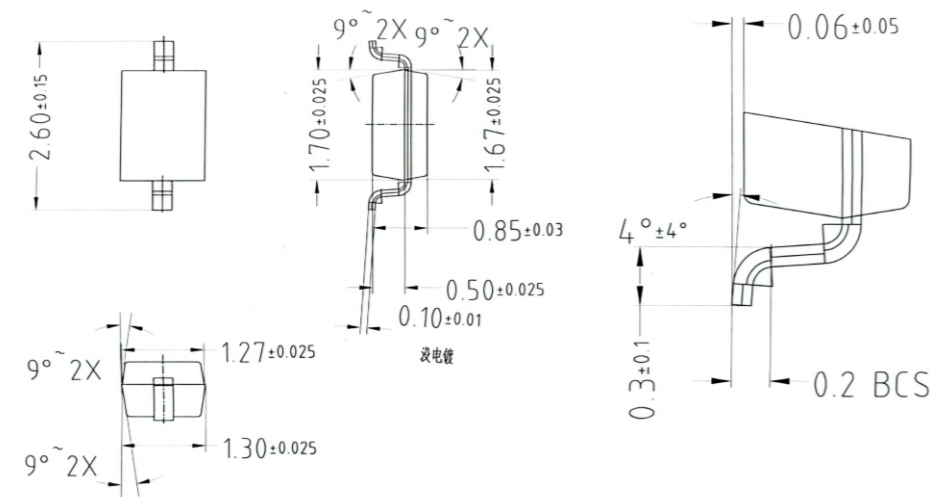
SOT-23-6



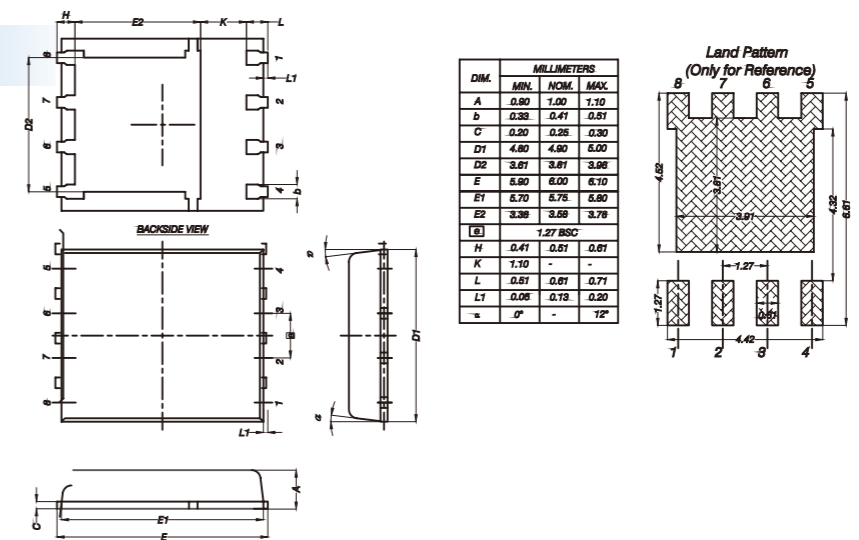
3X3



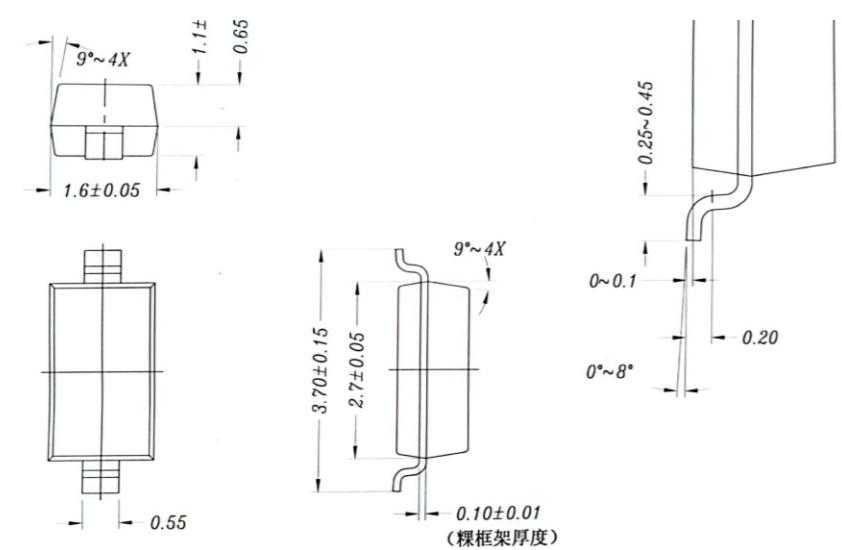
SOD323



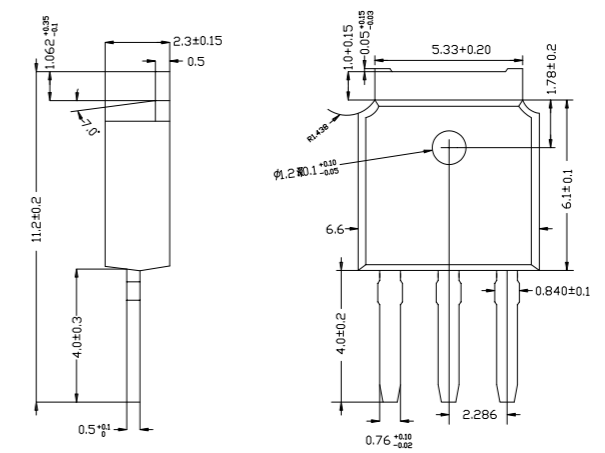
5X6



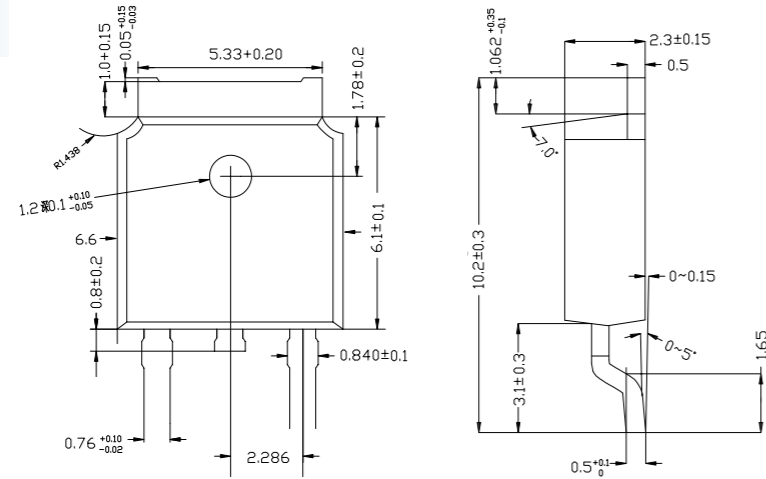
SOD123



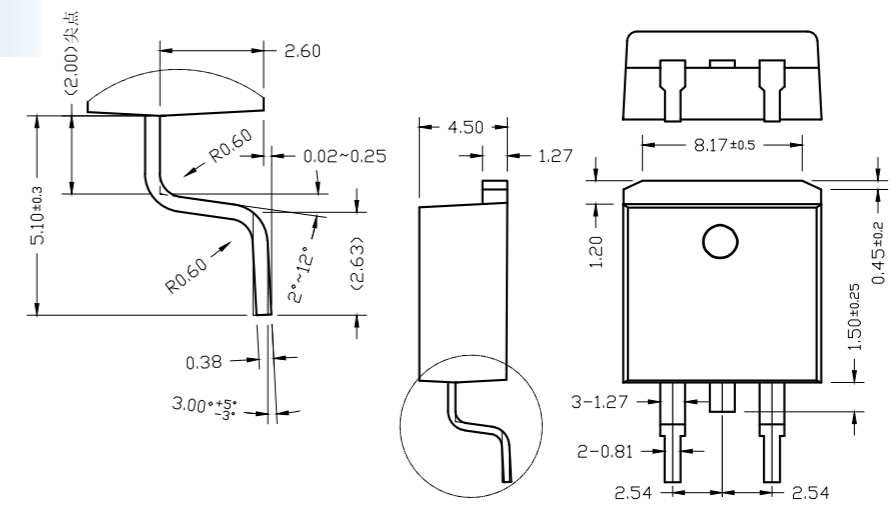
251



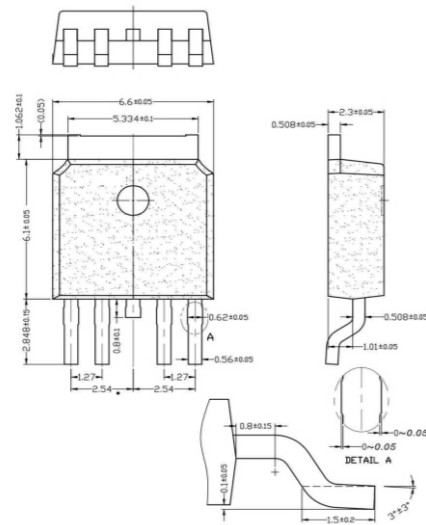
252



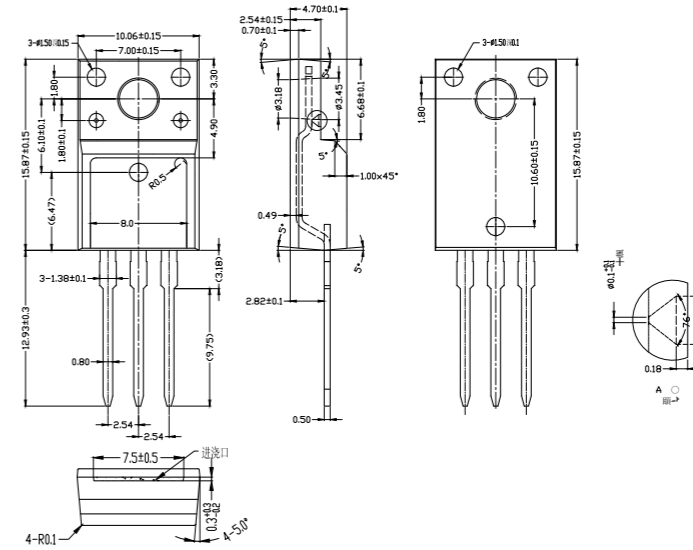
TO-263



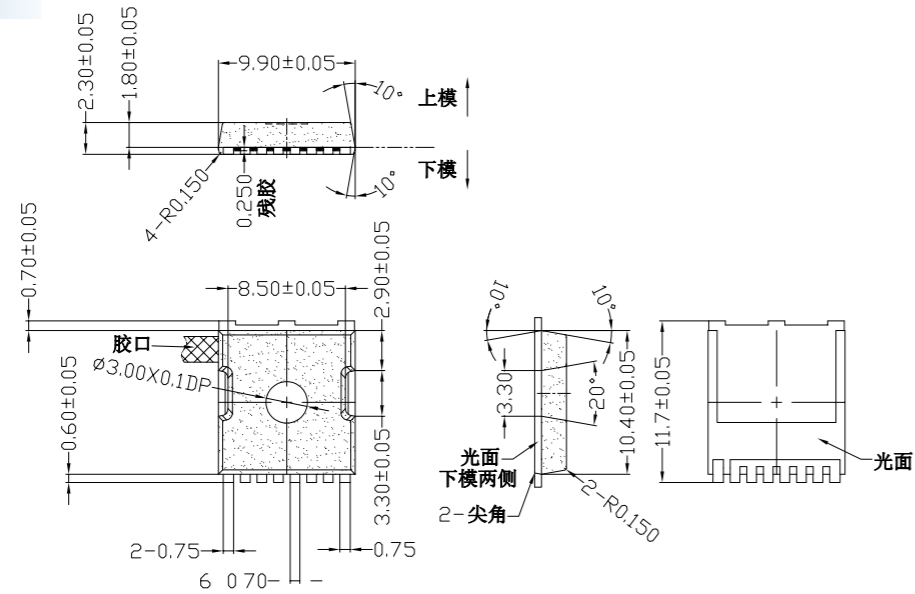
252-4L



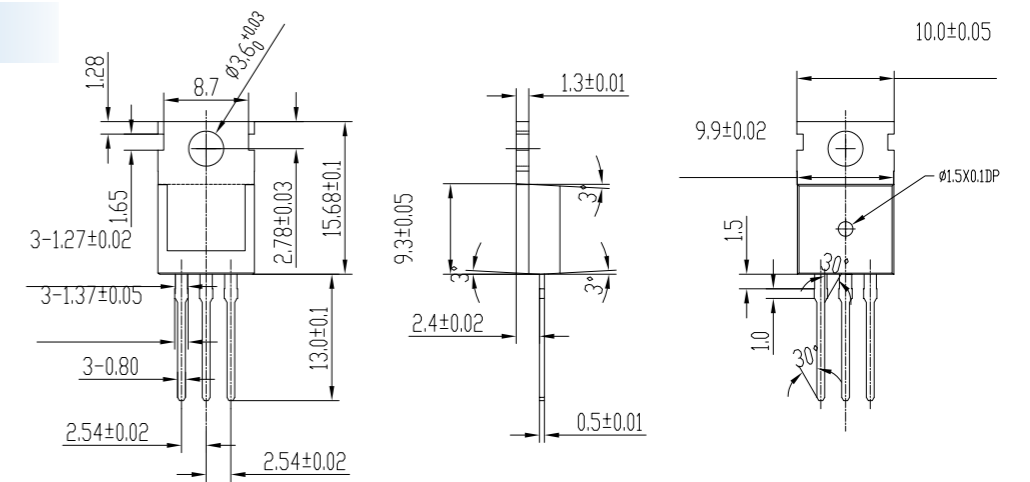
TO-220F



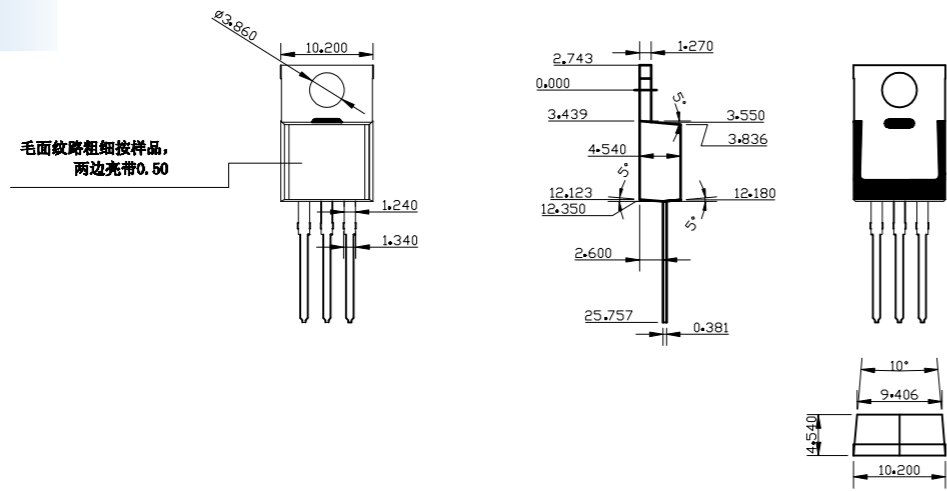
TOLL



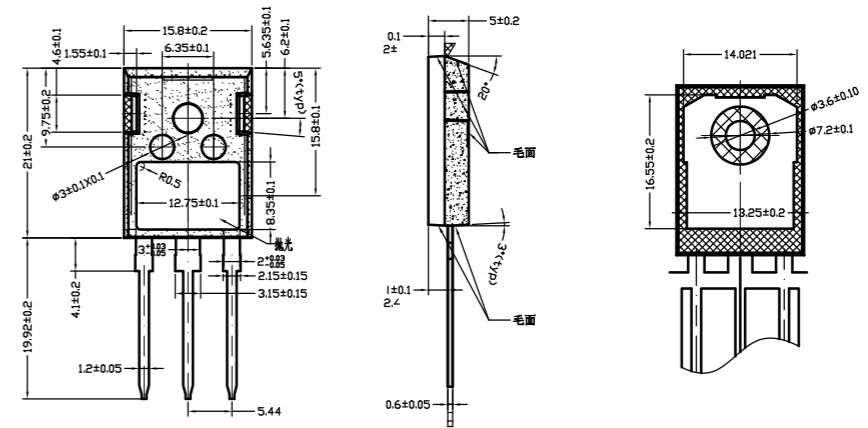
220C



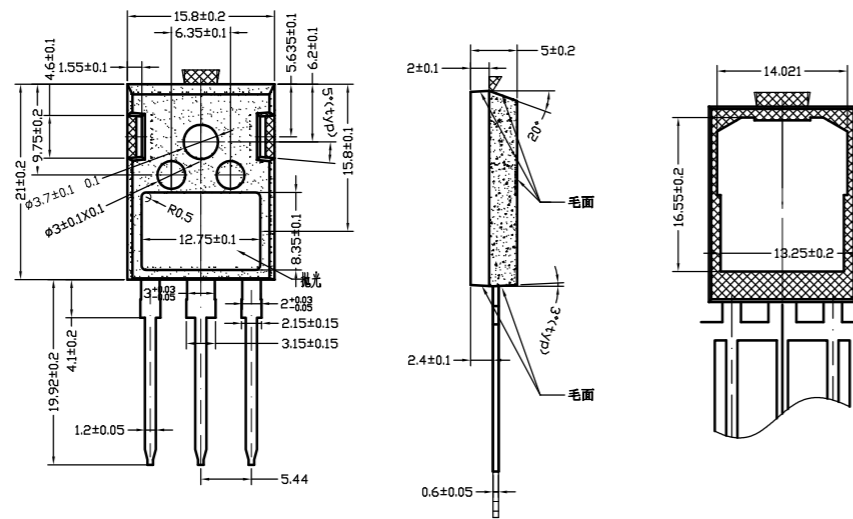
220AB



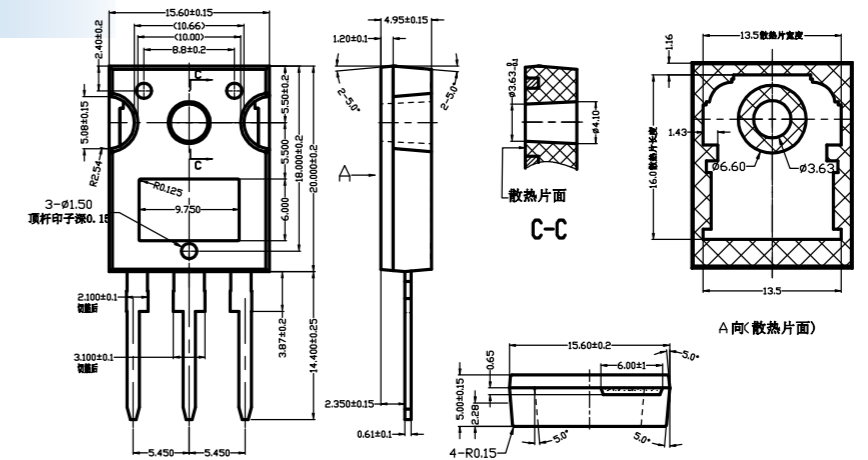
TO-247-3L



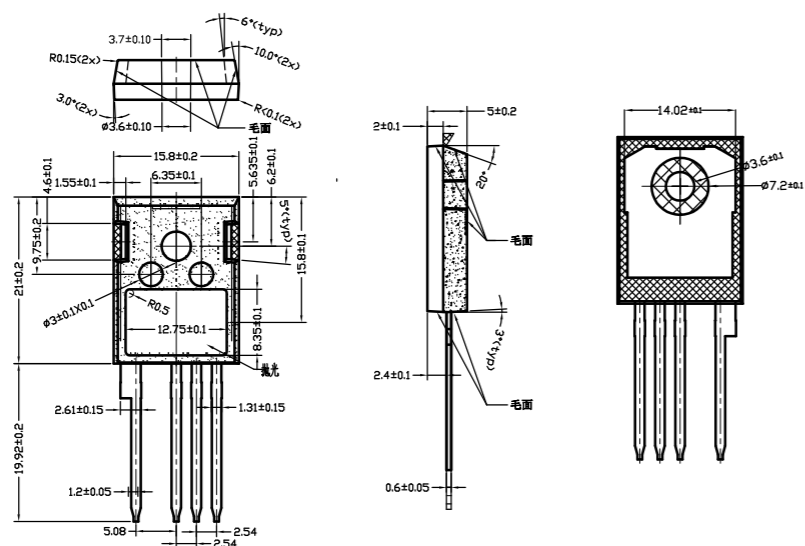
TO-247-PLUS



TO-247S



TO-247-4L



TO-3PN

